



PASSIVE CONNECTIVITY SOLUTIONS FOR ENTERPRISE NETWORKS

For Faster & Better Connectivity

DATACONNECT®

Premium Cabling Solutions for High Performance Networks

A. FIBER CONNECTIVITY SYSTEMS

FIBER MANAGEMENT SOLUTIONS

1U LC/SC Rack Mount Panel	01
2U LC/SC Rack Mount Panel	02
4U LC/SC Rack Mount Panel	03

FIBER PIGTAILS

LC/SC Fiber Pigtails	05
----------------------	----

DUPLEX FIBER PATCH CORDS

LC - LC Duplex Uniboot Fiber Patch Cords	07
LC - LC Duplex Uniboot Pull Tab Fiber Patch Cords	08

B. COPPER CONNECTIVITY SYSTEMS

ETHERNET CABLES

CAT6 UTP Ethernet LAN Cable	10
CAT6 F/UTP Ethernet LAN Cable	11
CAT6 S/FTP Ethernet LAN Cable	12
CAT6A UTP Ethernet High Speed Cable	13
CAT6A U/FTP Ethernet High Speed Cable	14
CAT6A F/UTP Ethernet High Speed Cable	15
CAT6A S/FTP Ethernet High Speed Cable	16

ETHERNET PATCH CORDS

CAT6 UTP RJ-45 Patch Cord	18
CAT6 FTP RJ-45 Patch Cord	19
CAT6 S/FTP RJ-45 Patch Cord	20
CAT6A UTP RJ-45 Patch Cord	21
CAT6A FTP RJ-45 Patch Cord	22
CAT6A S/FTP RJ-45 Patch Cord	23

ETHERNET IO JACKS

CAT6 Unshielded RJ-45 IO Jack	25
CAT6 Shielded Die-Cast RJ-45 IO Jack	26
CAT6A Unshielded RJ-45 IO Jack	27
CAT6A Shielded Die-Cast RJ-45 IO Jack	28

ETHERNET IO JACK PANEL

CAT6 Unshielded IO Jack Panel – 1U	30
CAT6 Shielded IO Jack Panel – 1U	31
CAT6A Unshielded IO Jack Panel – 1U	32
CAT6A Shielded IO Jack Panel – 1U	33

IO FACEPLATES

1P/2P/4P Wall Faceplate	35
-------------------------	----

FIBER MANAGEMENT SOLUTIONS

1U LC/SC RACK MOUNT PANEL

HTL provides a variety of fiber optic patch panel/ LIU for fiber management systems (FMS) applications. FMS panels are used to provide cable interconnections between communication facilities integrating fiber splicing, fiber terminations and fiber patching with fiber cable connections together in a single unit. It can also work as a protective device to secure fiber optic connections from physical damages during operations.

PRODUCT FEATURES

- 1U sliding drawer type
- Indoor installation grade
- Powder coated CRCA panel
- Adequate cable storage space
- Front removable adapter plate
- Pre-installed with tube for fan out fibers
- Provided with pigtail for guiding fiber pigtails
- Provided with FRP clamping for rear cable entry
- Provided with ABS splice tray for splice management



FIBER TERMINATIONS

- Fusion splicing
- Direct patching
- Distribution network
- Fiber capacity upto 48F

APPLICATIONS

- Data center
- Central office
- Premise cabling
- FTTH access networks
- Data communication networks



ORDERING DETAILS

SL. NO.	Part code	Product description
1	LIURSSPG2I06241A012F	1U 12F SM SC PC Simplex LIU Loaded
2	LIURSSPG2I06241A024F	1U 24F SM SC PC Simplex LIU Loaded
3	LIURLSPG2I06241A012F	1U 12F SM LC PC Simplex LIU Loaded
4	LIURLSPG2I06241A024F	1U 24F SM LC PC Simplex LIU Loaded
5	LIURFRPG2I06241A012F	1U 12F SM FC PC Simplex LIU Loaded
6	LIURFRPG2I06241A024F	1U 24F SM FC PC Simplex LIU Loaded
7	LIURSDPG2I06241A024F	1U 24F SM SC PC Duplex LIU Loaded
8	LIURLDPG2I06241A024F	1U 24F SM LC PC Duplex LIU Loaded
9	LIURLDPG2I06241A048F	1U 48F SM LC PC Duplex LIU Loaded

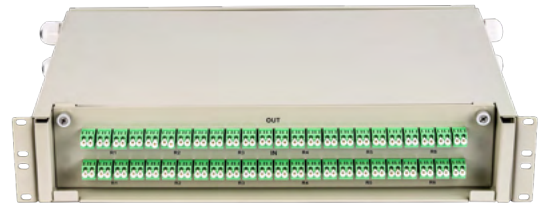
FIBER MANAGEMENT SOLUTIONS

2U LC/SC RACK MOUNT PANEL

HTL provides a variety of fiber optic patch panel/ LIU for fiber management systems (FMS) applications. FMS panels are used to provide cable interconnections between communication facilities integrating fiber splicing, fiber terminations and fiber patching with fiber cable connections together in a single unit. It can also work as a protective device to secure fiber optic connections from physical damages during operations.

PRODUCT FEATURES

- 2U sliding drawer type
- Indoor installation grade
- Powder coated CRCA panel
- Adequate cable storage space
- Front removable adapter plate
- Pre-installed with tube for fan out fibers
- Provided with pigtail for guiding fiber pigtails
- Provided with FRP clamping for rear cable entry
- Provided with ABS splice tray for splice management



FIBER TERMINATIONS

- Fusion splicing
- Direct patching
- Distribution network
- Fiber capacity upto 96F

APPLICATIONS

- Data center
- Central office
- Premise cabling
- FTTH access networks
- Data communication networks



ORDERING DETAILS

SL. NO.	Part code	Product description
1	LIURSSPG2I06242A048F	2U 48F SM SC PC Simplex LIU Loaded
2	LIURLSPG2I06242A048F	2U 48F SM LC PC Simplex LIU Loaded
3	LIURFRPG2I06242A048F	2U 48F SM FC PC Simplex LIU Loaded
4	LIURFRPG2I12242A096F	2U 96F SM FC PC Simplex LIU Loaded
5	LIURSDPG2I12242A096F	2U 96F SM SC PC Duplex LIU Loaded
6	LIURLDPG2I12242A096F	2U 96F SM LC PC Duplex LIU Loaded

FIBER MANAGEMENT SOLUTIONS

4U LC/SC RACK MOUNT PANEL

HTL provides a variety of fiber optic patch panel/ LIU for fiber management systems (FMS) applications. FMS panels are used to provide cable interconnections between communication facilities integrating fiber splicing, fiber terminations and fiber patching with fiber cable connections together in a single unit. It can also work as a protective device to secure fiber optic connections from physical damages during operations.

PRODUCT FEATURES

- 4U sliding drawer type
- Indoor installation grade
- Powder coated CRCA panel
- Adequate cable storage space
- Front removable adapter plate
- Pre-installed with tube for fan out fibers
- Provided with pigtail for guiding fiber pigtails
- Provided with FRP clamping for rear cable entry
- Provided with ABS splice tray for splice management



FIBER TERMINATIONS

- Fusion splicing
- Direct patching
- Distribution network
- Fiber capacity upto 288F

APPLICATIONS

- Data center
- Central office
- Premise cabling
- FTTH access networks
- Data communication networks



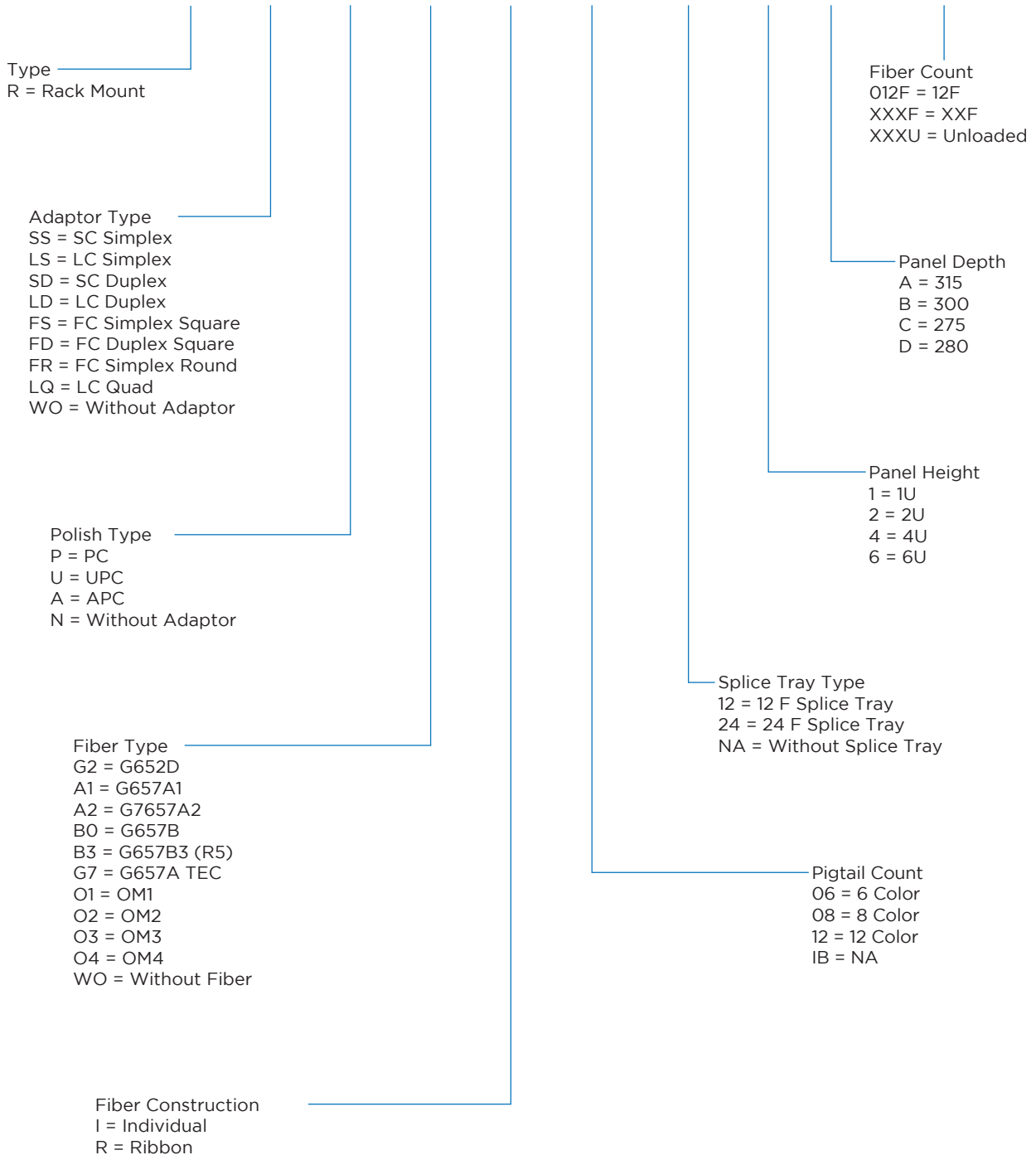
ORDERING DETAILS

SL. NO.	Part code	Product description
1	LIURSSPG2I12244A096F	4U 96F SM SC PC Simplex LIU Loaded
2	LIURLDPG2I12244A192F	4U 192F SM LC PC Duplex LIU Loaded

PART CODE SCHEME

Replace X with the correct code to determine the correct LIU configuration

LIU - X XX X XX X XX XX X X XXXF



FIBER PIGTAILS

LC/SC FIBER PIGTAILS

HTL Passive Connectivity Solutions provides variety of fiber optic pigtail assemblies for singlemode and multimode type fiber applications.

PRODUCT FEATURES

- Standard or custom assemblies
- Controlled fiber protrusion type
- Precision ferrule end-face geometry
- Available in different fiber connectors
- Available in Single mode and multimode fiber cores
- Factory polished and tested as per relevant standards



APPLICATIONS

- Data center
- Central office
- FTTH access networks
- Premise cabling networks
- Data communication networks



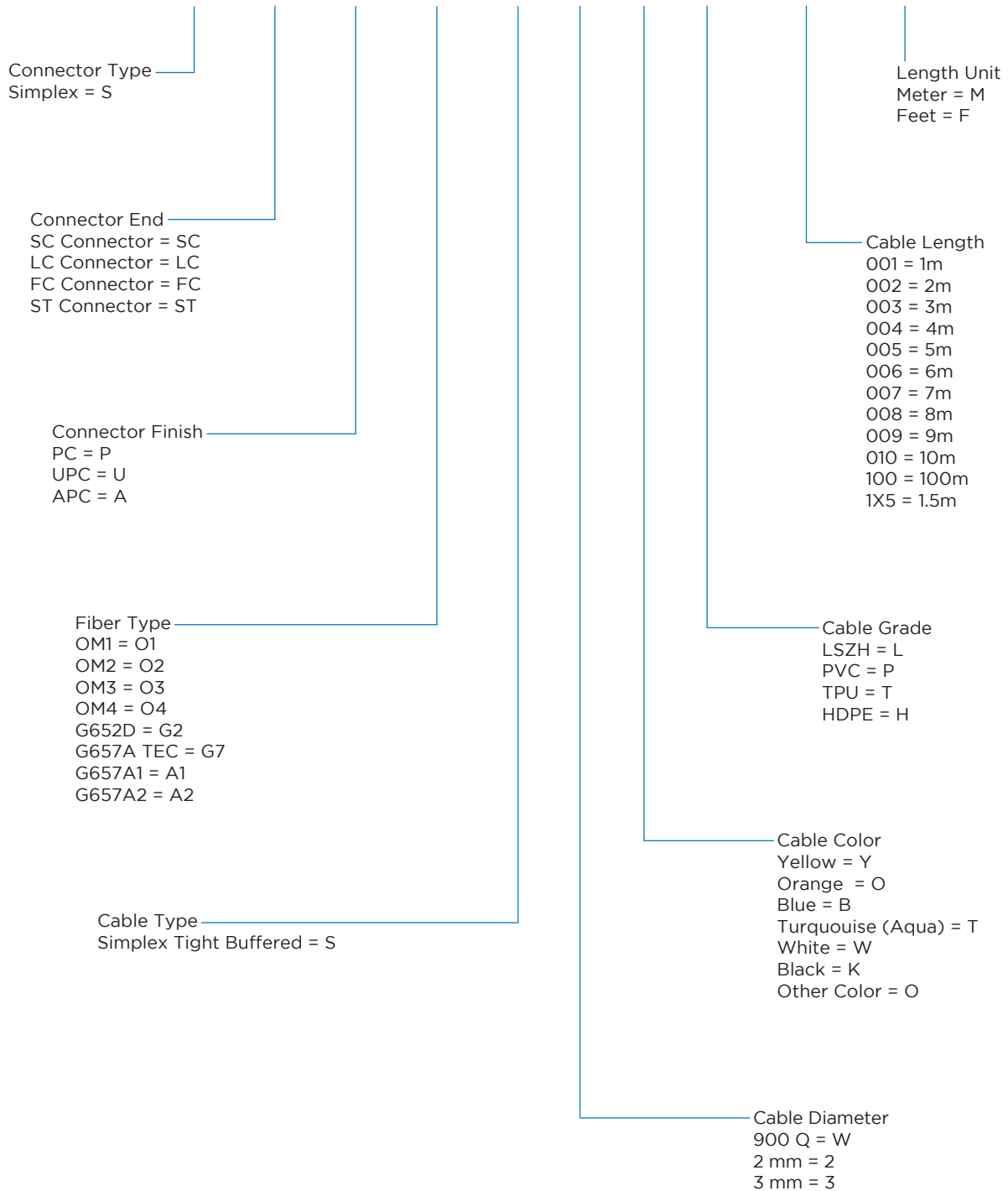
ORDERING DETAILS

SL. NO.	Part code	Product description
1	HT-PT1S3041001C	LC PC, Singlemode Pigtail 1.0m
2	HT-PT1S304101AC	LC PC, Singlemode Pigtail 1.5m
3	HT-PT1S3051001C	LC APC, Singlemode Pigtail 1.0m
4	HT-PT1S305101AC	LC APC, Singlemode Pigtail 1.5m
5	HT-PT2S3041001C	LC PC, Singlemode G657A1 Pigtail 1.0m

PART CODE SCHEME

Replace X with the correct code to determine the correct Fiber Pigtail configuration

P - X XX X XX X X X X XXX X



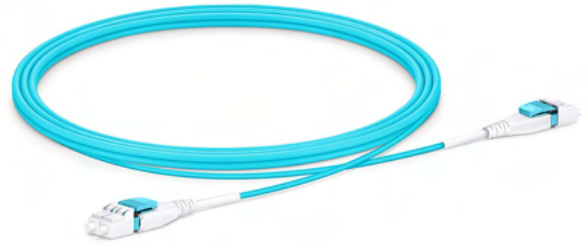
DUPLEX FIBER PATCH CORDS

LC - LC DUPLEX UNIBOOT FIBER PATCH CORDS

HTL's innovative & space-saving LC Pull Tab Fiber Patch Cords, as available in Single Mode & Multi-mode fiber types, are ideal for reducing cabling congestion in high-density assembly environments such as Data Centers, Central Office & FTTx networks.

PRODUCT FEATURES

- Ultra-low loss
- Compact 2mm round cable
- Low-profile housing design
- Bend-insensitive/bend optimized fibers
- Color-coded shroud to denote performance
- Fast polarity reversal with unique rotating connector keys
- Pulling tab for easy access to connectors in high-density environments
- Available in single-mode (OS1/OS2) and multi-mode (OM1/OM2/OM3/OM4/OM5) fiber types



APPLICATIONS

- FTTx
- Central Office
- Telecommunications
- Data Centers Cabling
- Structured Cabling Networks



ORDERING DETAILS

SL. NO.	Part code	Product description
1	PCULCUULCUG2R2YL001M	Patch Cord LC/UPC Uniboot G652D 2mm LSZH Yellow 1m
2	PCULCUULCUG2R2YL003M	Patch Cord LC/UPC Uniboot G652D 2mm LSZH Yellow 3m
3	PCULCUULCUA1R2YL001M	Patch Cord LC/UPC Uniboot G657A1 2mm LSZH Yellow 1m
4	PCULCUULCUA1R2YL003M	Patch Cord LC/UPC Uniboot G657A1 2mm LSZH Yellow 3m
5	PCULCUULCUO1R2OL001M	Patch Cord LC/UPC Uniboot OM1 2mm LSZH Orange 1m
6	PCULCUULCUO1R2OL003M	Patch Cord LC/UPC Uniboot OM1 2mm LSZH Orange 3m
7	PCULCUULCUO2R2AL001M	Patch Cord LC/UPC Uniboot OM2 2mm LSZH Orange 1m
8	PCULCUULCUO2R2AL003M	Patch Cord LC/UPC Uniboot OM2 2mm LSZH Orange 3m
9	PCULCUULCUO3R2AL001M	Patch Cord LC/UPC Uniboot OM3 2mm LSZH Aqua 1m
10	PCULCUULCUO3R2AL003M	Patch Cord LC/UPC Uniboot OM3 2mm LSZH Aqua 3m
11	PCULCUULCUO4R2XL001M	Patch Cord LC/UPC Uniboot OM4 2mm LSZH Erika Violet 1m
12	PCULCUULCUO4R2XL003M	Patch Cord LC/UPC Uniboot OM4 2mm LSZH Erika Violet 3m

*cable length available as per customer requirements

DUPLEX FIBER PATCH CORDS

LC - LC DUPLEX UNIBOOT PULL TAB FIBER PATCH CORDS

HTL's innovative & space-saving LC Uniboot Pull Tab Fiber Patch Cords, as available in Single Mode & Multimode fiber types, are ideal for reducing cabling congestion in high-density assembly environments such as Data Centers, Central Office & FTTx networks.

PRODUCT FEATURES

- Ultra-low loss
- Compact 2mm round cable
- Low-profile housing design
- Bend-insensitive/bend optimized fibers
- Color-coded shroud to denote performance
- Fast polarity reversal with unique rotating connector keys
- Pulling tab for easy access to connectors in high-density environments
- Available in single-mode (OS1/OS2) and multi-mode (OM1/OM2/OM3/OM4/OM5) fiber types



APPLICATIONS

- FTTx
- Central Office
- Telecommunications
- Data Centers Cabling
- Structured Cabling Networks



ORDERING DETAILS

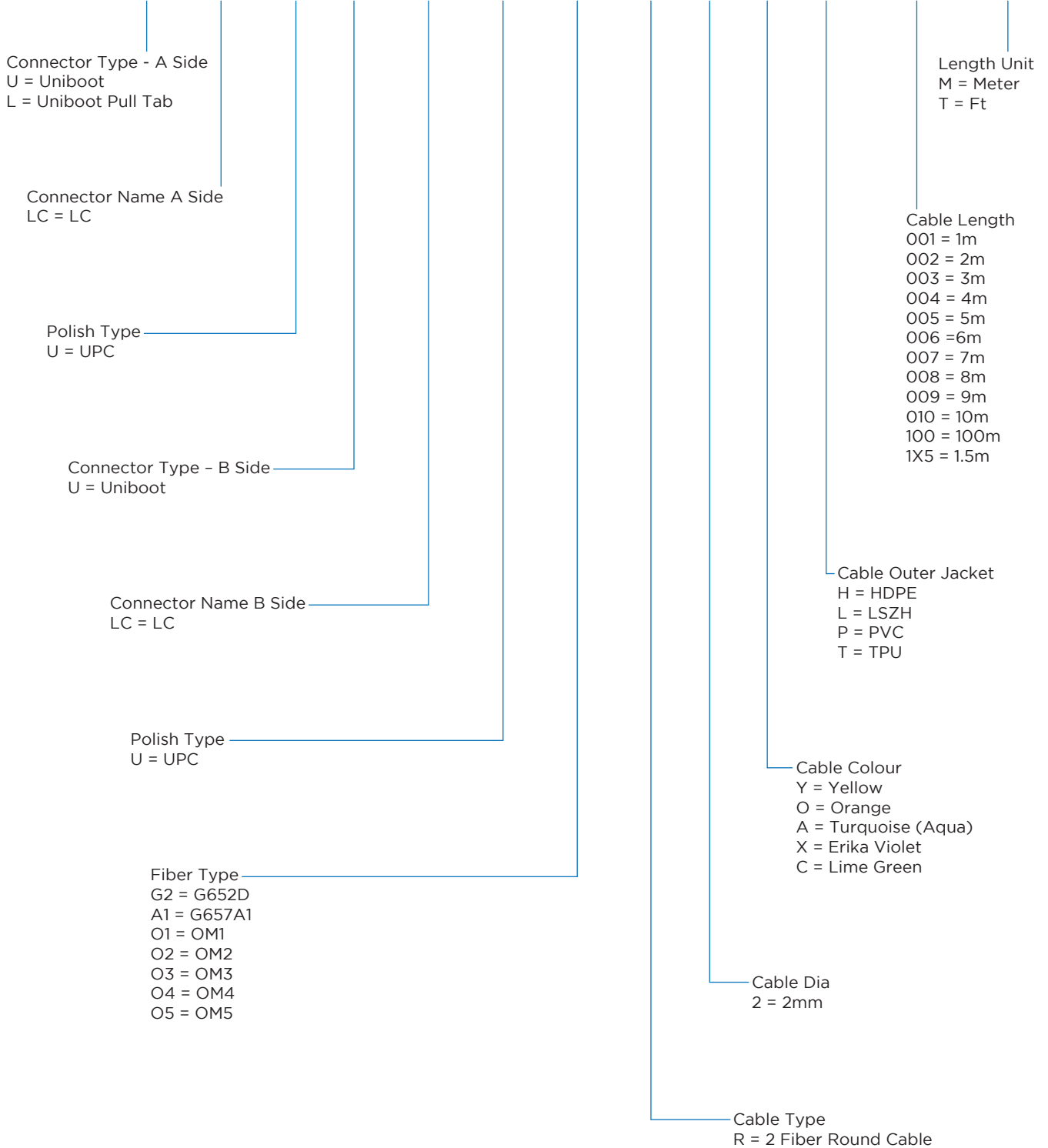
SL. NO.	Part code	Product description
1	PCLLCULLCUG2R2YL001M	Patch Cord LC/UPC Uniboot Pull Tab G652D 2mm LSZH Yellow 1m
2	PCLLCULLCUG2R2YL003M	Patch Cord LC/UPC Uniboot Pull Tab G652D 2mm LSZH Yellow 3m
3	PCLLCULLCUA1R2YL001M	Patch Cord LC/UPC Uniboot Pull Tab G657A1 2mm LSZH Yellow 1m
4	PCLLCULLCUA1R2YL003M	Patch Cord LC/UPC Uniboot Pull Tab G657A1 2mm LSZH Yellow 3m
5	PCLLCULLCUO1R2OL001M	Patch Cord LC/UPC Uniboot Pull Tab OM1 2mm LSZH Orange 1m
6	PCLLCULLCUO1R2OL003M	Patch Cord LC/UPC Uniboot Pull Tab OM1 2mm LSZH Orange 3m
7	PCLLCULLCUO2R2AL001M	Patch Cord LC/UPC Uniboot Pull Tab OM2 2mm LSZH Orange 1m
8	PCLLCULLCUO2R2AL003M	Patch Cord LC/UPC Uniboot Pull Tab OM2 2mm LSZH Orange 3m
9	PCLLCULLCUO3R2AL001M	Patch Cord LC/UPC Uniboot Pull Tab OM3 2mm LSZH Aqua 1m
10	PCLLCULLCUO3R2AL003M	Patch Cord LC/UPC Uniboot Pull Tab OM3 2mm LSZH Aqua 3m
11	PCLLCULLCUO4R2XL001M	Patch Cord LC/UPC Uniboot Pull Tab OM4 2mm LSZH Erika Violet 1m
12	PCLLCULLCUO4R2XL003M	Patch Cord LC/UPC Uniboot Pull Tab OM4 2mm LSZH Erika Violet 3m

*cable length available as per customer requirements

PART CODE SCHEME

Replace X with the correct code to determine the correct LC Uniboot Patch Cord configuration

PC - X XX X X XX X XX X X X X XXX X



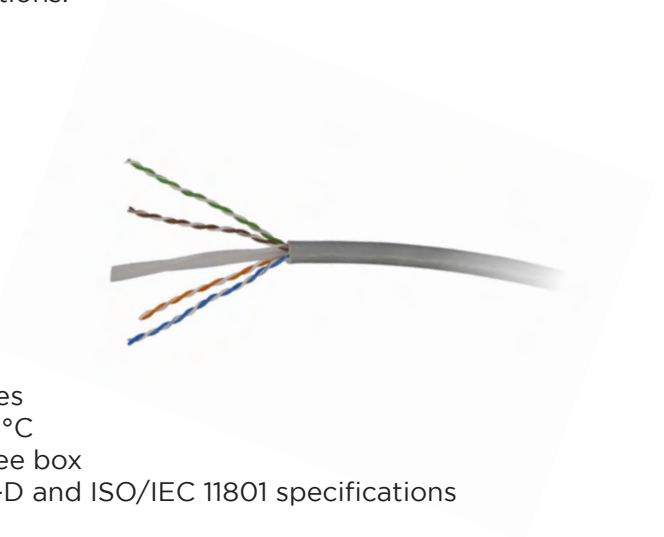
ETHERNET CABLES

CAT6 UTP ETHERNET LAN CABLE

HTL Passive Connectivity Solutions Cat6 U/UTP cable is designed to support high data rates, high bandwidth digital applications and indoor fixed installations.

PRODUCT FEATURES

- 4Pair UTP cable
- 23AWG & 24AWG solid bare copper
- Available in LSZH and FR PVC jacket
- Supports IEEE 802.3bt 4P PoE+ applications
- Supports 1Gbps speed data Ethernet applications
- Operates at bandwidth of 250 MHz for high data rates
- Temperature rating during operation and storage 75°C
- Packaging type: Reel of 305m in a spool in a snag free box
- Meets and exceeds requirements of ANSI/TIA-568.2-D and ISO/IEC 11801 specifications



APPLICATIONS

- Premise cabling
- LAN Ethernet systems
- Data communication networks
- Surveillance camera networks



ORDERING DETAILS

SL. NO.	Part code	Product description
1	CABAUASBNSNFG305MR	CAT6 U/UTP 23AWG Cable - PVC
2	CABAUASBNSNLG305MR	CAT6 U/UTP 23AWG Cable - LSZH
3	CABAUBSBNFNFG305MR	CAT6 U/UTP 24AWG Cable - PVC
4	CABAUBSBNNLG305MR	CAT6 U/UTP 24AWG Cable - LSZH

ETHERNET CABLES

CAT6 F/UTP ETHERNET LAN CABLE

HTL Passive Connectivity Solutions Cat6 F/UTP cable is designed to support high data rates, high bandwidth digital applications and provides superior electromagnetic interference protection for indoor shielded installations.

PRODUCT FEATURES

- 4Pair F/UTP cable
- 23AWG solid bare copper
- Available in LSZH and FR PVC jacket
- Packaging type: Reel of 500m in a spool
- Supports IEEE 802.3bt 4P PoE+ applications
- Supports 1Gbps speed data Ethernet applications
- Operates at bandwidth of 250 MHz for high data rates
- Enhanced overall Aluminum foiled F/UTP construction
- Temperature rating during operation and storage 75°C
- Provides excellent electromagnetic interference (EMI) protection
- Meets and exceeds requirements of ANSI/TIA-568.2-D and ISO/IEC 11801 specifications



APPLICATIONS

- Premise cabling
- LAN Ethernet systems
- Data communication networks
- Surveillance camera networks



ORDERING DETAILS

SL. NO.	Part code	Product description
1	CABAFASBNSNFG305MR	CAT6 F/UTP 23AWG Cable - PVC
2	CABAFASBNSNLG305MR	CAT6 F/UTP 23AWG Cable - LSZH

ETHERNET CABLES

CAT6 S/FTP ETHERNET LAN CABLE

HTL Passive Connectivity Solutions Cat6 S/FTP cable is designed to support high data rates, high bandwidth digital applications and provides superior electromagnetic interference protection and voice immunity for indoor shielded installations.

PRODUCT FEATURES

- 4Pair S/FTP cable
- 23AWG solid bare copper
- Available in LSZH and FR PVC jacket
- Packaging type: Reel of 500m in a spool
- Supports IEEE 802.3bt 4P PoE+ applications
- Supports 1Gbps speed data Ethernet applications
- Enhanced overall high screen coverage outer braid
- Individual foil around each pair STP cable construction
- Operates at bandwidth of 250 MHz for high data rates
- Temperature rating during operation and storage 75°C
- Provides superior electromagnetic interference (EMI) protection
- Provide superior noise immunity and coupling attenuation performance
- Meets and exceeds requirements of ANSI/TIA-568.2-D and ISO/IEC 11801 specifications



APPLICATIONS

- Premise cabling
- LAN Ethernet systems
- Data communication networks
- Surveillance camera networks



ORDERING DETAILS

SL. NO.	Part code	Product description
1	CABASASB4DGFAPB305MR	CAT6 S/FTP 23AWG Cable - PE
2	CABASASB4DGFAPB305MR	CAT6 S/FTP 23AWG Cable - LSZH

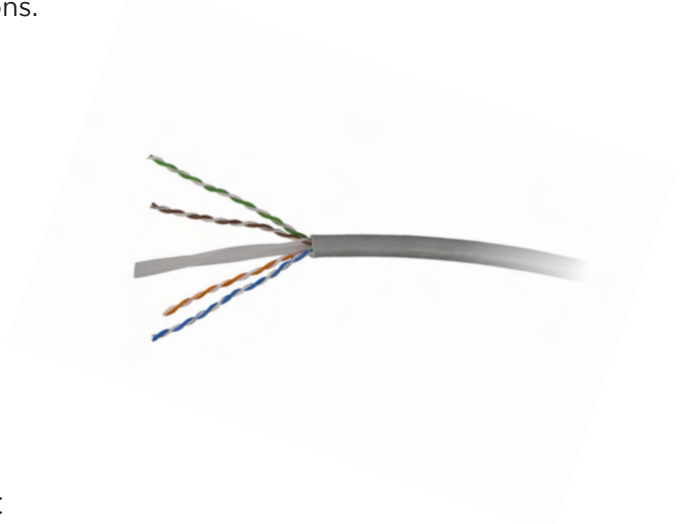
ETHERNET CABLES

CAT6A UTP ETHERNET HIGH SPEED CABLE

HTL Passive Connectivity Solutions Cat6A UTP cable is designed to support high data rates, high bandwidth digital applications and indoor fixed installations.

PRODUCT FEATURES

- 4Pair UTP cable
- 23AWG solid bare copper
- Minimizes alien crosstalk signals
- Available in LSZH and FR PVC jacket
- Packaging type: Reel of 500m in a spool
- Supports IEEE 802.3bt 4P PoE+ applications
- Supports 10Gbps speed data Ethernet applications
- Operates at bandwidth of 500 MHz for high data rates
- Temperature rating during operation and storage 75°C
- Meets and exceeds requirements of ANSI/TIA-568.2-D and ISO/IEC 11801 specifications



APPLICATIONS

- Data center
- Premise cabling
- LAN Ethernet systems
- Data communication networks
- Surveillance camera networks



ORDERING DETAILS

SL. NO.	Part code	Product description
1	CABBUASBNSNFG305MR	CAT6A U/UTP 23AWG Cable - PVC
2	CABBUBSBNSNLG305MR	CAT6A U/UTP 24AWG Cable - LSZH

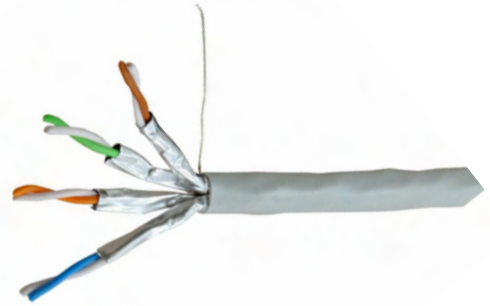
ETHERNET CABLES

CAT6A U/FTP ETHERNET HIGH SPEED CABLE

HTL Passive Connectivity Solutions Cat6A U/FTP cable is designed to support high data rates, high bandwidth digital applications and provides superior electromagnetic interference protection for indoor shielded installations.

PRODUCT FEATURES

- 4Pair U/FTP cable
- 23AWG solid bare copper
- Available in LSZH and FR PVC jacket
- Packaging type: Reel of 500m in a spool
- Supports IEEE 802.3bt 4P PoE+ applications
- Supports 10Gbps speed data Ethernet applications
- Operates at bandwidth of 500 MHz for high data rates
- Temperature rating during operation and storage 75°C
- Provides excellent electromagnetic interference (EMI) protection
- Enhanced individual Aluminum foiled around each pair U/FTP construction
- Meets and exceeds requirements of ANSI/TIA-568.2-D and ISO/IEC 11801 specifications



APPLICATIONS

- Data center
- Premise cabling
- LAN Ethernet systems
- Data communication networks
- Surveillance camera networks



ORDERING DETAILS

SL. NO.	Part code	Product description
1	CABBIASBNSNFG305MR	CAT6A U/FTP 23AWG Cable - PVC
2	CABBIASBNSNLG305MR	CAT6A U/FTP 23AWG Cable - LSZH

ETHERNET CABLES

CAT6A F/UTP ETHERNET HIGH SPEED CABLE

HTL Passive Connectivity Solutions Cat6A F/UTP cable is designed to support high data rates, high bandwidth digital applications and provides superior electromagnetic interference protection for indoor shielded installations.

PRODUCT FEATURES

- 4Pair F/UTP cable
- 23AWG solid bare copper
- Available in LSZH and FR PVC jacket
- Packaging type: Reel of 500m in a spool
- Supports IEEE 802.3bt 4P PoE+ applications
- Supports 10Gbps speed data Ethernet applications
- Operates at bandwidth of 500 MHz for high data rates
- Enhanced overall Aluminum foiled F/UTP construction
- Temperature rating during operation and storage 75°C
- Provides excellent electromagnetic interference (EMI) protection
- Meets and exceeds requirements of ANSI/TIA-568.2-D and ISO/IEC 11801 specifications



APPLICATIONS

- Data center
- Premise cabling
- LAN Ethernet systems
- Data communication networks
- Surveillance camera networks



ORDERING DETAILS

SL. NO.	Part code	Product description
1	CABBFASBNSNFG305MR	CAT6A F/UTP 23AWG Cable - PVC
2	CABBFASBNSNLG305MR	CAT6A F/UTP 23AWG Cable - LSZH

ETHERNET CABLES

CAT6A S/FTP ETHERNET HIGH SPEED CABLE

HTL Passive Connectivity Solutions Cat6A S/FTP cable is designed to support high data rates, high bandwidth digital applications and provides superior electromagnetic interference protection and voice immunity for indoor shielded installations.

PRODUCT FEATURES

- 4Pair S/FTP cable
- 23AWG solid bare copper
- Available in LSZH and FR PVC jacket
- Packaging type: Reel of 500m in a spool
- Supports IEEE 802.3bt 4P PoE+ applications
- Supports 10Gbps speed data Ethernet applications
- Enhanced overall high screen coverage outer braid
- Individual foil around each pair STP cable construction
- Operates at bandwidth of 500 MHz for high data rates
- Temperature rating during operation and storage 75°C
- Provides superior electromagnetic interference (EMI) protection
- Provide superior noise immunity and coupling attenuation performance
- Meets and exceeds requirements of ANSI/TIA-568.2-D and ISO/IEC 11801 specifications



APPLICATIONS

- Data center
- Premise cabling
- LAN Ethernet systems
- Data communication networks
- Surveillance camera networks



ORDERING DETAILS

SL. NO.	Part code	Product description
1	CABBSASB4DGFAPB305MR	CAT6A S/FTP 23AWG Cable - PVC
2	CABBSBSB4DGFAPB305MR	CAT6A S/FTP 24AWG Cable - LSZH

PART CODE SCHEME

Replace X with the correct code to determine the correct Ethernet Cable configuration

CAB - X X X X X X X X X X X X XXX X X

Category Variant
 CAT6 = A
 CAT6A = B
 CAT5E = C

Category Type
 UTP = U
 SF/UTP = S
 F/UTP = F
 U/FTP = I

AWG
 23 = A
 24 = B
 26 = C

Copper Cable Type
 Solid = S
 Stranded = T

Copper Type
 Bare Copper = B
 Tinned Copper = T

Tinned Copper Branding %
 40% = 4
 50% = 5
 60% = 6
 ≥70% = 7
 Customized = C
 UTP & F/UTP Not Applicable = N
 Only Strength Member GI = M

Sheath Type
 Single Sheath = S
 Double Sheath = D

Inner Sheath Color
 Grey = G
 Black = B
 Blue = L
 Green = N
 Yellow = Y
 Red = R

Packing
 Box = B
 Reel = R

Length Unit
 Meter = M
 FT = T

Length
 305 = 305
 500 = 500

Outer Sheath Color
 Grey = G
 Black = B
 Blue = L
 Green = N
 Yellow = Y
 Red = R
 Single Sheath = N

Outer Sheath Material
 PVC = F
 LSZH = L
 PE = P
 Single Sheath = N

Armouring
 GI Armoured = G
 AL Armoured = A
 Non Armoured = N
 ECCS Armoured = E

Inner Sheath Material
 PVC = F
 LSZH = L
 PE = P

ETHERNET PATCH CORDS

CAT6 UTP RJ-45 PATCH CORD

HTL Passive Connectivity Solutions Cat6 U/UTP patch cords are designed to support high data rates, high bandwidth digital applications and indoor fixed installations.

PRODUCT FEATURES

- Wiring: T568B
- 4Pair UTP RJ-45 patch cords
- Supports data Ethernet applications
- Both component & channel compliant
- Patch cords are available in 5 colours
- Available in LSZH and FR PVC Jacket
- 24AWG multi strand copper conductors
- Supports IEEE 802.3bt 4P PoE+ applications
- Available in standard and customized lengths
- Operates at bandwidth of 250 MHz for high data rates
- Temperature rating during operation and storage 75°C
- Slim boot design RJ-45 unshielded plug for superior performance
- Meets and exceeds requirements of ANSI/TIA-568.2-D and ISO/IEC 11801 specifications



APPLICATIONS

- Data center
- Access points
- Premise cabling
- LAN Ethernet systems
- Data communication networks
- Indoor surveillance camera networks



ORDERING DETAILS

SL. NO.	Part code	Product description
1	PAUASBNAC1SNFG001M	CAT6 U/UTP Patch cord PVC Grey -1m
2	PAUASBNAC1SNLG001M	CAT6 U/UTP Patch cord LSZH Grey -1m
3	PAUASBNAC1SNFG003M	CAT6 U/UTP Patch cord PVC Grey -3m
4	PAUASBNAC1SNLG005M	CAT6 U/UTP Patch cord LSZH Grey -5m

ETHERNET PATCH CORDS

CAT6 FTP RJ-45 PATCH CORD

HTL Passive Connectivity Solutions Cat6 FTP shielded patch cords are designed to support high data rates, high bandwidth digital applications and indoor fixed installations.

PRODUCT FEATURES

- Wiring: T568B
- 4Pair FTP RJ-45 patch cords
- Supports data Ethernet applications
- Both component & channel compliant
- Patch cords are available in 5 colours
- Available in LSZH and FR PVC Jacket
- 24AWG multi strand copper conductors
- Supports IEEE 802.3bt 4P PoE+ applications
- Available in standard and customized lengths
- Enhanced overall foiled FTP cable construction
- Protection against electromagnetic interference
- Operates at bandwidth of 250 MHz for high data rates
- Temperature rating during operation and storage 75°C
- Slim boot design RJ-45 shielded plug for superior performance against noise signals
- Meets and exceeds requirements of ANSI/TIA-568.2-D and ISO/IEC 11801 specifications



APPLICATIONS

- Data center
- Access points
- Premise cabling
- Shielded installations
- LAN Ethernet systems
- Data communication networks
- Indoor surveillance camera networks



ORDERING DETAILS

SL. NO.	Part code	Product description
1	PAFASBNAC1SNFG001M	CAT6 F/UTP Patch cord PVC Grey -1m
2	PAFASBNAC1SNLG001M	CAT6 F/UTP Patch cord LSZH Grey -1m
3	PAFASBNAC1SNFG003M	CAT6 F/UTP Patch cord PVC Grey -3m
4	PAFASBNAC1SNLG005M	CAT6 F/UTP Patch cord LSZH Grey -5m

ETHERNET PATCH CORDS

CAT6 S/FTP RJ-45 PATCH CORD

HTL Passive Connectivity Solutions Cat6 S/FTP shielded patch cords are designed to support high data rates, high bandwidth digital applications and indoor fixed installations.

PRODUCT FEATURES

- Wiring: T568B
- 4Pair FTP RJ-45 patch cords
- Supports data Ethernet applications
- Both component & channel compliant
- Patch cords are available in 5 colours
- 24AWG multi strand copper conductors
- Supports IEEE 802.3bt 4P PoE+ applications
- Available in standard and customized lengths
- Enhanced overall foiled FTP cable construction
- Protection against electromagnetic interference
- Temperature rating during operation and storage 75°C
- Slim boot design RJ-45 shielded plug for superior performance against noise signals
- Meets and exceeds requirements of ANSI/TIA-568.2-D and ISO/IEC 11801 specifications



APPLICATIONS

- Data center
- Access points
- Premise cabling
- Shielded installations
- LAN Ethernet systems
- Data communication networks
- Indoor surveillance camera networks



ORDERING DETAILS

SL. NO.	Part code	Product description
1	PASASB4AC1BLSANN001M	CAT6 S/FTP 23AWG Patch cord LSZH Black -1m
2	PASASB4AC1BLSANN003M	CAT6 S/FTP 23AWG Patch cord LSZH Black -3m
3	PASBTB4AC1BLSANN001M	CAT6 S/FTP 24AWG Patch cord LSZH Black -1m
4	PASBTB4AC1BLSANN003M	CAT6 S/FTP 24AWG Patch cord LSZH Black -3m

ETHERNET PATCH CORDS

CAT6A UTP RJ-45 PATCH CORD

HTL Passive Connectivity Solutions Cat6A U/UTP patch cords are designed to support high data rates, high bandwidth digital applications and indoor fixed installations.

PRODUCT FEATURES

- Wiring: T568B
- 4Pair UTP RJ-45 patch cords
- Both component & channel compliant
- Patch cords are available in 5 colours
- Available in LSZH and FR PVC Jacket
- 24AWG multi strand copper conductors
- Supports 10G data Ethernet applications
- Supports IEEE 802.3bt 4P PoE+ applications
- Available in standard and customized lengths
- Operates at bandwidth of 500 MHz for high data rates
- Temperature rating during operation and storage 75°C
- Slim boot design RJ-45 unshielded plug for superior performance
- Meets and exceeds requirements of ANSI/TIA-568.2-D and ISO/IEC 11801 specifications



APPLICATIONS

- Data center
- Access points
- Premise cabling
- LAN Ethernet systems
- Data communication networks
- Indoor surveillance camera networks



ORDERING DETAILS

SL. NO.	Part code	Product description
1	PBUASBNAC1SNFG001M	CAT6A U/UTP Patch cord PVC Grey -1mt
2	PBUASBNAC1SNLG001M	CAT6A U/UTP Patch cord LSZH Grey -1m
3	PBUASBNAC1SNFG003M	CAT6A U/UTP Patch cord PVC Grey -3m
4	PBUASBNAC1SNLG005M	CAT6A U/UTP Patch cord LSZH Grey -5m

ETHERNET PATCH CORDS

CAT6A FTP RJ-45 PATCH CORD

HTL Passive Connectivity Solutions Cat6A FTP shielded patch cords are designed to support high data rates, high bandwidth digital applications and indoor fixed installations.

PRODUCT FEATURES

- Wiring: T568B
- 4Pair FTP RJ-45 patch cords
- Both component & channel compliant
- Patch cords are available in 5 colours
- Available in LSZH and FR PVC Jacket
- 24AWG multi strand copper conductors
- Supports 10G data Ethernet applications
- Supports IEEE 802.3bt 4P PoE+ applications
- Available in standard and customized lengths
- Enhanced overall foiled FTP cable construction
- Protection against electromagnetic interference
- Operates at bandwidth of 500 MHz for high data rates
- Temperature rating during operation and storage 75°C
- Slim boot design RJ-45 shielded plug for superior performance against noise signals
- Meets and exceeds requirements of ANSI/TIA-568.2-D and ISO/IEC 11801 specifications



APPLICATIONS

- Data center
- Access points
- Premise cabling
- Shielded installations
- LAN Ethernet systems
- Data communication networks
- Indoor surveillance camera networks



ORDERING DETAILS

SL. NO.	Part code	Product description
1	PBFASBNACISNFG001M	CAT6A F/UTP Patch cord PVC Grey -1m
2	PBFASBNACISNLG001M	CAT6A F/UTP Patch cord LSZH Grey -1m
3	PBFASBNACISNFG003M	CAT6A F/UTP Patch cord PVC Grey -3m
4	PBFASBNACISNLG005M	CAT6A F/UTP Patch cord LSZH Grey -5m

ETHERNET PATCH CORDS

CAT6A S/FTP RJ-45 PATCH CORD

HTL Passive Connectivity Solutions Cat6A S/FTP shielded patch cords are designed to support high data rates, high bandwidth digital applications and indoor fixed installations.

PRODUCT FEATURES

- Wiring: T568B
- 4Pair FTP RJ-45 patch cords
- Supports data Ethernet applications
- Both component & channel compliant
- Patch cords are available in 5 colours
- 24AWG multi strand copper conductors
- Supports IEEE 802.3bt 4P PoE+ applications
- Available in standard and customized lengths
- Enhanced overall foiled FTP cable construction
- Protection against electromagnetic interference
- Temperature rating during operation and storage 75°C
- Slim boot design RJ-45 shielded plug for superior performance against noise signals
- Meets and exceeds requirements of ANSI/TIA-568.2-D and ISO/IEC 11801 specifications



APPLICATIONS

- Data center
- Access points
- Premise cabling
- Shielded installations
- LAN Ethernet systems
- Data communication networks
- Indoor surveillance camera networks



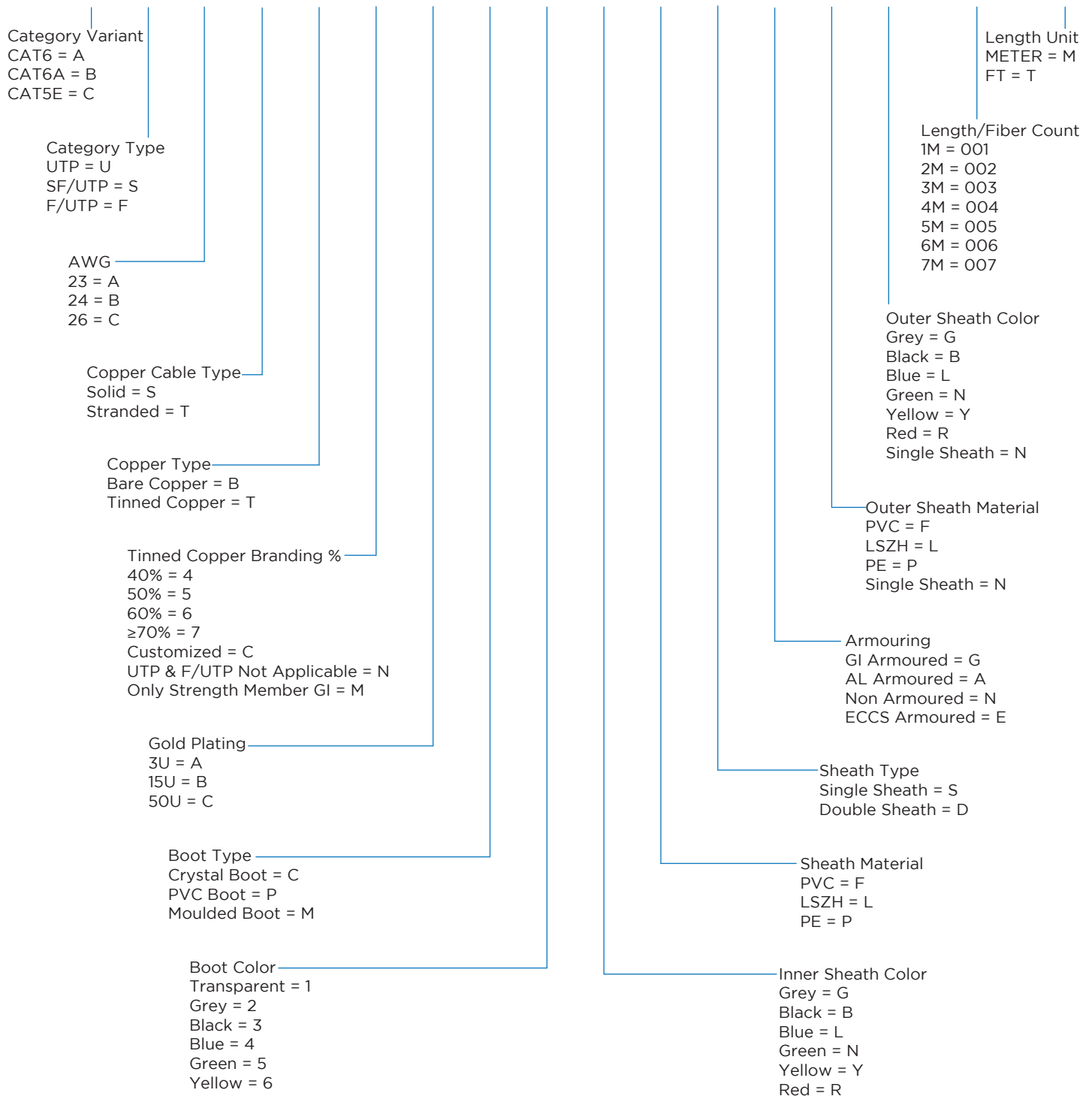
ORDERING DETAILS

SL. NO.	Part code	Product description
1	PBSASB4AC1BLSANN001M	CAT6A S/FTP 23AWG Patch cord LSZH Black -1m
2	PBSASB4AC1BLSANN003M	CAT6A S/FTP 23AWG Patch cord LSZH Black -3m
3	PBSBTB4AC1BLSANN001M	CAT6A S/FTP 24AWG Patch cord LSZH Black -1m
4	PBSBTB4AC1BLSANN003M	CAT6A S/FTP 24AWG Patch cord LSZH Black -3m

PART CODE SCHEME

Replace X with the correct code to determine the correct Ethernet Patch Cords configuration

P - X X X X X X X X X X X X X X XXX X



ETHERNET IO JACKS

CAT6 UNSHIELDED RJ-45 IO JACK

HTL Passive Connectivity Solutions Cat6 U/UTP (Unshielded Twisted Pair) information outlet jacks are designed to support high data rates, high bandwidth digital applications and indoor fixed installations.

PRODUCT FEATURES

- Wiring: T568A/B
- Easy punch down type
- Keystone universal design
- Supports data Ethernet applications
- Both component & channel compliant
- Keystone IO's are available in 6 colours
- Molded plastic material for body and housing
- Operates at bandwidth of 250 MHz for high data rates
- Temperature rating during operation and storage 75°C
- Designed for unshielded twisted pair (UTP) 23/24AWG cables
- Meets and exceeds requirements of ANSI/TIA-568.2-D and ISO/IEC 11801 specifications



APPLICATIONS

- Data center
- Access points
- Premise cabling
- LAN Ethernet systems
- Data communication networks
- Indoor surveillance camera networks



ORDERING DETAILS

SL. NO.	Part code	Product description
1	IOJKC06UTPA03WHI	CAT6 UTP IO Jack White
2	IOJKC06UTPA03BLU	CAT6 UTP IO Jack Blue
3	IOJKC06UTPA03GRN	CAT6 UTP IO Jack Green
4	IOJKC06UTPA03BLK	CAT6 UTP IO Jack Black

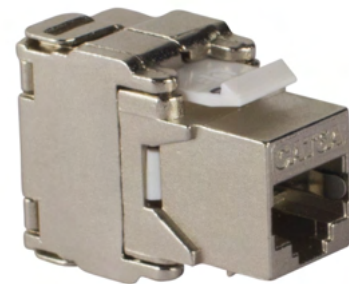
ETHERNET IO JACKS

CAT6 SHIELDED DIE-CAST RJ-45 IO JACK

HTL Passive Connectivity Solutions Cat6 STP (Shielded Twisted Pair) information outlet jacks are designed to support high data rates, high bandwidth digital applications and indoor fixed installations.

PRODUCT FEATURES

- Wiring: T568A/B
- Easy punch down type
- Keystone universal design
- Supports data Ethernet applications
- Both component & channel compliant
- Keystone IO's are available in 6 colours
- Operates at bandwidth of 250 MHz for high data rates
- Temperature rating during operation and storage 75°C
- Designed for shielded twisted pair (STP) 23/24AWG cables
- Excellent shielding for protection against electromagnetic interference
- Molded plastic material for body and housing with Die cast outer body for shielding
- Meets and exceeds requirements of ANSI/TIA-568.2-D and ISO/IEC 11801 specifications



APPLICATIONS

- Data center
- Access points
- Premise cabling
- Shielded installations
- LAN Ethernet systems
- Data communication networks
- Indoor surveillance camera networks



ORDERING DETAILS

SL. NO.	Part code	Product description
1	IOJKC06STPA03WHI	CAT6 STP IO Jack White
2	IOJKC06STPA03BLU	CAT6 STP IO Jack Blue
3	IOJKC06STPA03GRN	CAT6 STP IO Jack Green
4	IOJKC06STPA03BLK	CAT6 STP IO Jack Black

ETHERNET IO JACKS

CAT6A UNSHIELDED RJ-45 IO JACK

HTL Passive Connectivity Solutions Cat6A U/UTP (Unshielded Twisted Pair) information outlet jacks are designed to support high data rates, high bandwidth digital applications and indoor fixed installations.

PRODUCT FEATURES

- Wiring: T568A/B
- Easy punch down type
- Keystone universal design
- Both component & channel compliant
- Keystone IO's are available in 6 colours
- Supports 10G data Ethernet applications
- Molded plastic material for body and housing
- Operates at bandwidth of 500 MHz for high data rates
- Temperature rating during operation and storage 75°C
- Designed for unshielded twisted pair (UTP) 23/24AWG cables
- Meets and exceeds requirements of ANSI/TIA-568.2-D and ISO/IEC 11801 specifications



APPLICATIONS

- Data center
- Access points
- Premise cabling
- LAN Ethernet systems
- Data communication networks
- Indoor surveillance camera networks



ORDERING DETAILS

SL. NO.	Part code	Product description
1	IOJKC6AUTPA03WHI	CAT6A UTP IO Jack White
2	IOJKC6AUTPA03BLU	CAT6A UTP IO Jack Blue
3	IOJKC6AUTPA03GRN	CAT6A UTP IO Jack Green
4	IOJKC6AUTPA03BLK	CAT6A UTP IO Jack Black

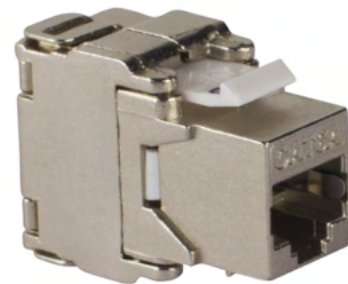
ETHERNET IO JACKS

CAT6A SHIELDED DIE-CAST RJ-45 IO JACK

HTL Passive Connectivity Solutions Cat6A STP (Shielded Twisted Pair) information outlet jacks are designed to support high data rates, high bandwidth digital applications and indoor fixed installations.

PRODUCT FEATURES

- Wiring: T568A/B
- Easy punch down type
- Keystone universal design
- Both component & channel compliant
- Keystone IO's are available in 6 colours
- Supports 10G data Ethernet applications
- Operates at bandwidth of 500 MHz for high data rates
- Temperature rating during operation and storage 75°C
- Designed for shielded twisted pair (STP) 23/24AWG cables
- Excellent shielding for protection against electromagnetic interference
- Molded plastic material for body and housing with Die cast outer body for shielding
- Meets and exceeds requirements of ANSI/TIA-568.2-D and ISO/IEC 11801 specifications



APPLICATIONS

- Data center
- Access points
- Premise cabling
- Shielded installations
- LAN Ethernet systems
- Data communication networks
- Indoor surveillance camera networks



ORDERING DETAILS

SL. NO.	Part code	Product description
1	IOJKC6ASTPA03WHI	CAT6A STP IO Jack White
2	IOJKC6ASTPA03BLU	CAT6A STP IO Jack Blue
3	IOJKC6ASTPA03GRN	CAT6A STP IO Jack Green
4	IOJKC6ASTPA03BLK	CAT6A STP IO Jack Black

PART CODE SCHEME

Replace X with the correct code to determine the correct IO Jack configuration

IOJK - XXX XXX X XX XXX

Type
CAT 5E = C5E
CAT 6 = C06
CAT 6A = C6A

Shielding
UTP = UTP
STP = STP

IO Config
90 = A
180 = B
Toolless = T

Color
White = WHI
Red = RED
Yellow = YLW
Green = GRN

IO Gold
3U = 03
50U = 50

ETHERNET IO JACK PANEL

CAT6 UNSHIELDED IO JACK PANEL – 1U

HTL Passive Connectivity Solutions Cat6 UTP (Unshielded Twisted Pair) IO jack panels are designed to support high data rates, high bandwidth digital applications and indoor fixed installations.

PRODUCT FEATURES

- Wiring: T568A/B
- Easy punch down type
- Keystone universal design
- Supports data Ethernet applications
- Available in straight and angular type
- Both component & channel compliant
- Available in 1U 24 ports and 2U 48 ports
- Loaded with black Keystone IO UTP jacks
- Operates at bandwidth of 250 MHz for high data rates
- Temperature rating during operation and storage 75°C
- Powder coated CRCA black panel with removable rear cable manager
- Meets and exceeds requirements of ANSI/TIA-568.2-D and ISO/IEC 11801 specifications



APPLICATIONS

- Data center
- Access points
- Premise cabling
- LAN Ethernet systems
- Data communication networks



ORDERING DETAILS

SL. NO.	Part code	Product description
1	PPC06UTPS1L06B24	CAT6 UTP 24P 1U Straight Jack Panel
2	PPC06UTPA1L12B24	CAT6 UTP 24P 1U Angled Jack Panel
3	PPC06UTPS2L08B48	CAT6 UTP 48P 2U Straight Jack Panel
4	PPC06UTPA2L18B48	CAT6 UTP 48P 2U Angled Jack Panel

ETHERNET IO JACK PANEL

CAT6 SHIELDED IO JACK PANEL – 1U

HTL Passive Connectivity Solutions Cat6 STP (Shielded Twisted Pair) IO jack panels are designed to support high data rates, high bandwidth digital applications and indoor fixed installations.

PRODUCT FEATURES

- Wiring: T568A/B
- Easy punch down type
- Keystone universal design
- Supports data Ethernet applications
- Available in straight and angular type
- Both component & channel compliant
- Available in 1U 24 ports and 2U 48 ports
- Loaded with Keystone STP Die-cast type IO jacks
- Operates at bandwidth of 250 MHz for high data rates
- Temperature rating during operation and storage 75°C
- Excellent shielding for protection against electromagnetic interference
- Powder coated CRCA black panel with removable rear cable manager
- Meets and exceeds requirements of ANSI/TIA-568.2-D and ISO/IEC 11801 specifications



APPLICATIONS

- Data center
- Access points
- Premise cabling
- Shielded installations
- LAN Ethernet systems
- Data communication networks



ORDERING DETAILS

SL. NO.	Part code	Product description
1	PPC06STPS1L06B24	CAT6 STP 24P 1U Straight Jack Panel
2	PPC06STPA1L12B24	CAT6 STP 24P 1U Angled Jack Panel
3	PPC06STPS2L08B48	CAT6 STP 48P 2U Straight Jack Panel
4	PPC06STPA2L18B48	CAT6 STP 48P 2U Angled Jack Panel

ETHERNET IO JACK PANEL

CAT6A UNSHIELDED IO JACK PANEL – 1U

HTL Passive Connectivity Solutions Cat6A UTP (Unshielded Twisted Pair) IO jack panels are designed to support high data rates, high bandwidth digital applications and indoor fixed installations.

PRODUCT FEATURES

- Wiring: T568A/B
- Easy punch down type
- Keystone universal design
- Available in straight and angular type
- Both component & channel compliant
- Available in 1U 24 ports and 2U 48 ports
- Supports 10G data Ethernet applications
- Loaded with black Keystone IO UTP jacks
- Operates at bandwidth of 500 MHz for high data rates
- Temperature rating during operation and storage 75°C
- Powder coated CRCA black panel with removable rear cable manager
- Meets and exceeds requirements of ANSI/TIA-568.2-D and ISO/IEC 11801 specifications



APPLICATIONS

- Data center
- Access points
- Premise cabling
- LAN Ethernet systems
- Data communication networks



ORDERING DETAILS

SL. NO.	Part code	Product description
1	PPC6AUTPS1L06B24	CAT6A UTP 24P 1U Straight Jack Panel
2	PPC6AUTPA1L12B24	CAT6A UTP 24P 1U Angled Jack Panel
3	PPC6AUTPS2L08B48	CAT6A UTP 48P 2U Straight Jack Panel
4	PPC6AUTPA2L18B48	CAT6A UTP 48P 2U Angled Jack Panel

ETHERNET IO JACK PANEL

CAT6A SHIELDED IO JACK PANEL – 1U

HTL Passive Connectivity Solutions Cat6A STP (Shielded Twisted Pair) IO jack panels are designed to support high data rates, high bandwidth digital applications and indoor fixed installations.

PRODUCT FEATURES

- Wiring: T568A/B
- Easy punch down type
- Keystone universal design
- Available in straight and angular type
- Both component & channel compliant
- Available in 1U 24 ports and 2U 48 ports
- Supports 10G data Ethernet applications
- Loaded with Keystone STP Die-cast type IO jacks
- Operates at bandwidth of 500 MHz for high data rates
- Temperature rating during operation and storage 75°C
- Excellent shielding for protection against electromagnetic interference
- Powder coated CRCA black panel with removable rear cable manager
- Meets and exceeds requirements of ANSI/TIA-568.2-D and ISO/IEC 11801 specifications



APPLICATIONS

- Data center
- Access points
- Premise cabling
- Shielded installations
- LAN Ethernet systems
- Data communication networks



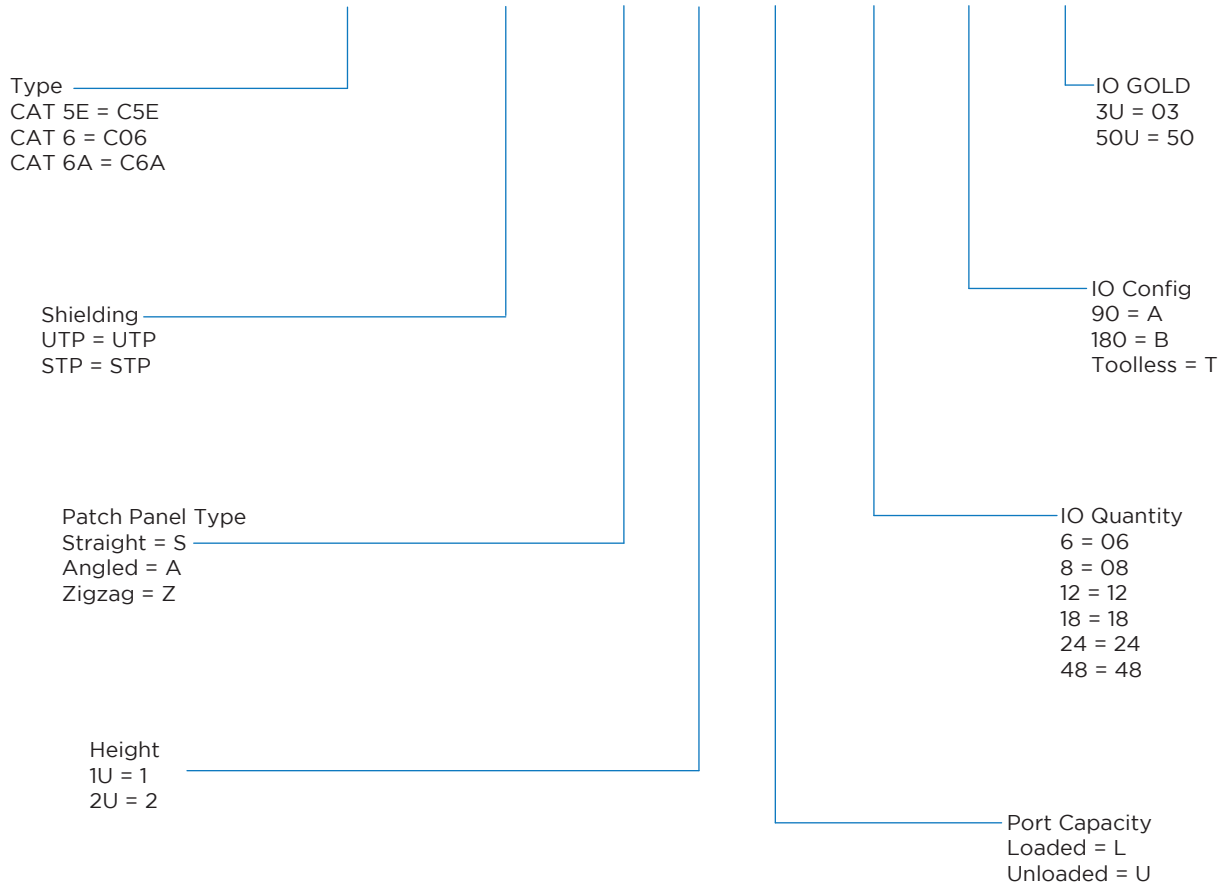
ORDERING DETAILS

SL. NO.	Part code	Product description
1	PPC6ASTPS1L06B24	CAT6A STP 24P 1U Straight Jack Panel
2	PPC6ASTPA1L12B24	CAT6A STP 24P 1U Angled Jack Panel
3	PPC6ASTPS2L08B48	CAT6A STP 48P 2U Straight Jack Panel
4	PPC6ASTPA2L18B48	CAT6A STP 48P 2U Angled Jack Panel

PART CODE SCHEME

Replace X with the correct code to determine the correct Jack Panel configuration

PP - XXX XXX X X X XX X XX



IO FACEPLATES

1P/2P/4P WALL FACEPLATE

HTL Passive Connectivity Solutions unloaded 86x86 faceplates can be configured to provide the ports required for the workstation LAN cabling. These faceplates are universal keystone design compatible with cat 6 & cat 6A unshielded and shielded keystone IO jacks

PRODUCT FEATURES

- ABS plastic body for aesthetic look
- Dimensions: 86mm X 86mm (UK style)
- Inbuilt spring type shutter for dust protection
- Available in 1port, 2 ports and 4ports design
- With integrated label holder for port identification
- Compatible for easy snap in of UTP and STP Keystone IO Jacks
- Individually removable IO ports for ease of maintenance during operations



APPLICATIONS

- Premise cabling
- Data access points
- LAN Ethernet systems
- Workstation LAN cabling
- Data communication network
- Indoor surveillance camera network



ORDERING DETAILS

SL. NO.	Part code	Product description
1	IOFCPT1PBTWTSWHI	1P Face Plate 86x86 - White
2	IOFCPT2PBTWTSWHI	2P Face Plate 86x86 - White
3	IOFCPT4PBTWTSWHI	4P Face Plate 86x86 - White

PART CODE SCHEME

Replace X with the correct code to determine the correct IO Face Plate configuration

IOFCPT - XX XX XXX XXX

Port _____
1 Port = 1P
2 Port = 2P
4 Port = 4P

Size _____
86 x 86 = BT

Color _____
White = WHI
Blue = BLU
Green = GRN
Black = BLK

Type _____
With Shutter = WTS
Without Shutter = WOS



HTL Registered office & factory:
HTL Ltd. No. 57, GST Road, Guindy, Chennai - 600032

 +91 94877 25575

 pcssales@htllimited.com

 www.htllimited.com