



PASSIVE CONNECTIVITY SOLUTIONS FOR CAMPUS NETWORKS

For Faster & Better Connectivity

DATACONNECT[®]

Premium Cabling Solutions for High Performance Networks

A. FIBER MANAGEMENT SOLUTIONS

FIBER MANAGEMENT SOLUTIONS

1U LC/SC Rack Mount Panel	01
2U LC/SC Rack Mount Panel	02
4U LC/SC Rack Mount Panel	03
12F/24F LC/SC Wall Mount Box - ABS	05
24F/48F LC/SC Wall Mount Box - ABS	06
12F/24F LC/SC Wall Mount Box - CRS	08
24F/48F LC/SC Wall Mount Box - CRS	09

FIBER SPLICE CLOSURES

Dome Splice Closure – Mechanical Type	11
Dome Splice Closure – Heat Shrink Type	12
Inline Splice Closure	13

FIBER PIGTAILS

LC/SC Fiber Pigtailes	15
-----------------------	----

DUPLEX FIBER PATCH CORDS

LC - LC Duplex Uniboot Fiber Patch Cords	17
LC - LC Duplex Uniboot Pull Tab Fiber Patch Cords	18

B. COPPER CONNECTIVITY SYSTEMS

ETHERNET CABLES

CAT6 UTP Ethernet LAN Cable	20
CAT6 F/UTP Ethernet LAN Cable	21
CAT6 S/FTP Ethernet LAN Cable	22
CAT6A UTP Ethernet High Speed Cable	23
CAT6A U/FTP Ethernet High Speed Cable	24
CAT6A F/UTP Ethernet High Speed Cable	25
CAT6A S/FTP Ethernet High Speed Cable	26

ETHERNET PATCH CORDS

CAT6 UTP RJ-45 Patch Cord	28
CAT6 FTP RJ-45 Patch Cord	29
CAT6 S/FTP RJ-45 Patch Cord	30
CAT6A UTP RJ-45 Patch Cord	31
CAT6A FTP RJ-45 Patch Cord	32
CAT6A S/FTP RJ-45 Patch Cord	33

ETHERNET IO JACKS

CAT6 Unshielded RJ-45 IO Jack	35
CAT6 Shielded Die-Cast RJ-45 IO Jack	36
CAT6A Unshielded RJ-45 IO Jack	37
CAT6A Shielded Die-Cast RJ-45 IO Jack	38

ETHERNET IO JACK PANEL

CAT6 Unshielded IO Jack Panel – 1U	40
CAT6 Shielded IO Jack Panel – 1U	41
CAT6A Unshielded IO Jack Panel – 1U	42
CAT6A Shielded IO Jack Panel – 1U	43

IO FACEPLATES

1P/2P/4P Wall Faceplate	45
-------------------------	----

FIBER MANAGEMENT SOLUTIONS

1U LC/SC RACK MOUNT PANEL

HTL provides a variety of fiber optic patch panel/ LIU for fiber management systems (FMS) applications. FMS panels are used to provide cable interconnections between communication facilities integrating fiber splicing, fiber terminations and fiber patching with fiber cable connections together in a single unit. It can also work as a protective device to secure fiber optic connections from physical damages during operations.

PRODUCT FEATURES

- 1U sliding drawer type
- Indoor installation grade
- Powder coated CRCA panel
- Adequate cable storage space
- Front removable adapter plate
- Pre-installed with tube for fan out fibers
- Provided with pigtail for guiding fiber pigtails
- Provided with FRP clamping for rear cable entry
- Provided with ABS splice tray for splice management



FIBER TERMINATIONS

- Fusion splicing
- Direct patching
- Distribution network
- Fiber capacity upto 48F

APPLICATIONS

- Data center
- Central office
- Premise cabling
- FTTH access networks
- Data communication networks



ORDERING DETAILS

SL. NO.	Part code	Product description
1	LIURSSPG2I06241A012F	1U 12F SM SC PC Simplex LIU Loaded
2	LIURSSPG2I06241A024F	1U 24F SM SC PC Simplex LIU Loaded
3	LIURLSPG2I06241A012F	1U 12F SM LC PC Simplex LIU Loaded
4	LIURLSPG2I06241A024F	1U 24F SM LC PC Simplex LIU Loaded
5	LIURFRPG2I06241A012F	1U 12F SM FC PC Simplex LIU Loaded
6	LIURFRPG2I06241A024F	1U 24F SM FC PC Simplex LIU Loaded
7	LIURSDPG2I06241A024F	1U 24F SM SC PC Duplex LIU Loaded
8	LIURLDPG2I06241A024F	1U 24F SM LC PC Duplex LIU Loaded
9	LIURLDPG2I06241A048F	1U 48F SM LC PC Duplex LIU Loaded

FIBER MANAGEMENT SOLUTIONS

2U LC/SC RACK MOUNT PANEL

HTL provides a variety of fiber optic patch panel/ LIU for fiber management systems (FMS) applications. FMS panels are used to provide cable interconnections between communication facilities integrating fiber splicing, fiber terminations and fiber patching with fiber cable connections together in a single unit. It can also work as a protective device to secure fiber optic connections from physical damages during operations.

PRODUCT FEATURES

- 2U sliding drawer type
- Indoor installation grade
- Powder coated CRCA panel
- Adequate cable storage space
- Front removable adapter plate
- Pre-installed with tube for fan out fibers
- Provided with pigtail for guiding fiber pigtails
- Provided with FRP clamping for rear cable entry
- Provided with ABS splice tray for splice management



FIBER TERMINATIONS

- Fusion splicing
- Direct patching
- Distribution network
- Fiber capacity upto 96F

APPLICATIONS

- Data center
- Central office
- Premise cabling
- FTTH access networks
- Data communication networks



ORDERING DETAILS

SL. NO.	Part code	Product description
1	LIURSSPG2I06242A048F	2U 48F SM SC PC Simplex LIU Loaded
2	LIURLSPG2I06242A048F	2U 48F SM LC PC Simplex LIU Loaded
3	LIURFRPG2I06242A048F	2U 48F SM FC PC Simplex LIU Loaded
4	LIURFRPG2I12242A096F	2U 96F SM FC PC Simplex LIU Loaded
5	LIURSDPG2I12242A096F	2U 96F SM SC PC Duplex LIU Loaded
6	LIURLDPG2I12242A096F	2U 96F SM LC PC Duplex LIU Loaded

FIBER MANAGEMENT SOLUTIONS

4U LC/SC RACK MOUNT PANEL

HTL provides a variety of fiber optic patch panel/ LIU for fiber management systems (FMS) applications. FMS panels are used to provide cable interconnections between communication facilities integrating fiber splicing, fiber terminations and fiber patching with fiber cable connections together in a single unit. It can also work as a protective device to secure fiber optic connections from physical damages during operations.

PRODUCT FEATURES

- 4U sliding drawer type
- Indoor installation grade
- Powder coated CRCA panel
- Adequate cable storage space
- Front removable adapter plate
- Pre-installed with tube for fan out fibers
- Provided with pigtail for guiding fiber pigtails
- Provided with FRP clamping for rear cable entry
- Provided with ABS splice tray for splice management



FIBER TERMINATIONS

- Fusion splicing
- Direct patching
- Distribution network
- Fiber capacity upto 288F

APPLICATIONS

- Data center
- Central office
- Premise cabling
- FTTH access networks
- Data communication networks



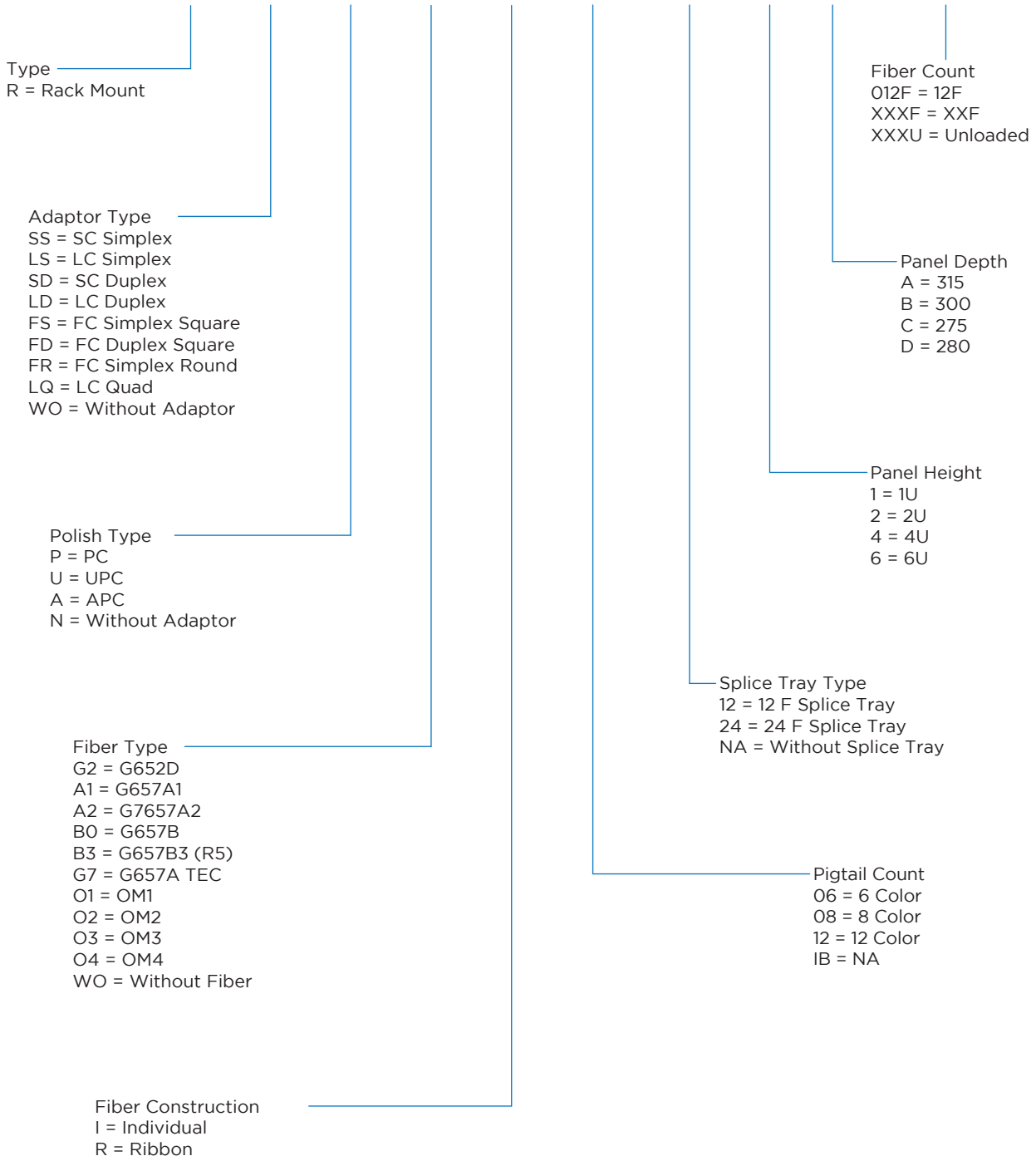
ORDERING DETAILS

SL. NO.	Part code	Product description
1	LIURSSPG2112244A096F	4U 96F SM SC PC Simplex LIU Loaded
2	LIURLDPG2112244A192F	4U 192F SM LC PC Duplex LIU Loaded

PART CODE SCHEME

Replace X with the correct code to determine the correct LIU configuration

LIU - X XX X XX X XX XX X X XXXF



FIBER MANAGEMENT SOLUTIONS

12F/24F LC/SC WALL MOUNT BOX - ABS

HTL Passive Connectivity Solutions wall mount fiber access terminal (FAT) box is designed to provide easy patching, storing fiber terminations for feeder cables, branch cable, direct connection and allocation. This FAT is used for both indoor & outdoor applications. This FAT can also be used to mount passive splitters and install fiber in small and medium size multi dwelling units (MDU's) for FTTx applications.

PRODUCT FEATURES

- IP-65 rated
- Ample storage for slack
- Installation: Indoor/Outdoor wall mount type
- Constructed of high quality PC/ABS material
- Available with unloaded and loaded variants
- Accommodates multimode and single mode fibers
- Accommodates 1:8 SC, 1:16 SC, 1:32 SC/LC PLC splitters
- Accommodates 24 Simplex SC and 24 Duplex LC adapters
- Single door type - can be flipped over for ease of access and maintenance
- Can be preloaded with SC, LC adapters and pre-terminated cable assemblies
- Accommodates all cables below 12mm outdoor/indoor cables and 3mm OD soft cables



APPLICATIONS

- Premise cabling
- FTTH access networks
- Data communication networks



ORDERING DETAILS

SL. NO.	Part code	Product description
1	FT2WSSPG2I0612A1012F	FAT Wall Mount ABS Type SC APC - 12F
2	FT2WSSPG2I0612A1024F	FAT Wall Mount ABS Type SC APC - 24F

FIBER MANAGEMENT SOLUTIONS

24F/48F LC/SC WALL MOUNT BOX - ABS

HTL Passive Connectivity Solutions wall mount fiber access terminal (FAT) box is designed to provide easy patching, storing fiber terminations for feeder cables, branch cable, direct connection and allocation. This FAT is used for both indoor & outdoor applications. This FAT can also be used to mount passive splitters and install fiber in small and medium size multi dwelling units (MDU's) for FTTx applications.

PRODUCT FEATURES

- IP-65 rated
- Ample storage for slack
- Installation: Indoor/Outdoor wall mount type
- Constructed of high quality PC/ABS material
- Available with unloaded and loaded variants
- Accommodates multimode and single mode fibers
- Accommodates 48 Simplex SC and 48 Duplex LC adapters
- Accommodates 1:8 SC, 1:16 SC, 1:32, 1:64 SC/LC PLC splitters
- Single door type - can be flipped over for ease of access and maintenance
- Can be preloaded with SC, LC adapters and pre-terminated cable assemblies
- Accommodates all cables below 12mm outdoor/indoor cables and 3mm OD soft cables



APPLICATIONS

- Premise cabling
- FTTH access networks
- Data communication networks



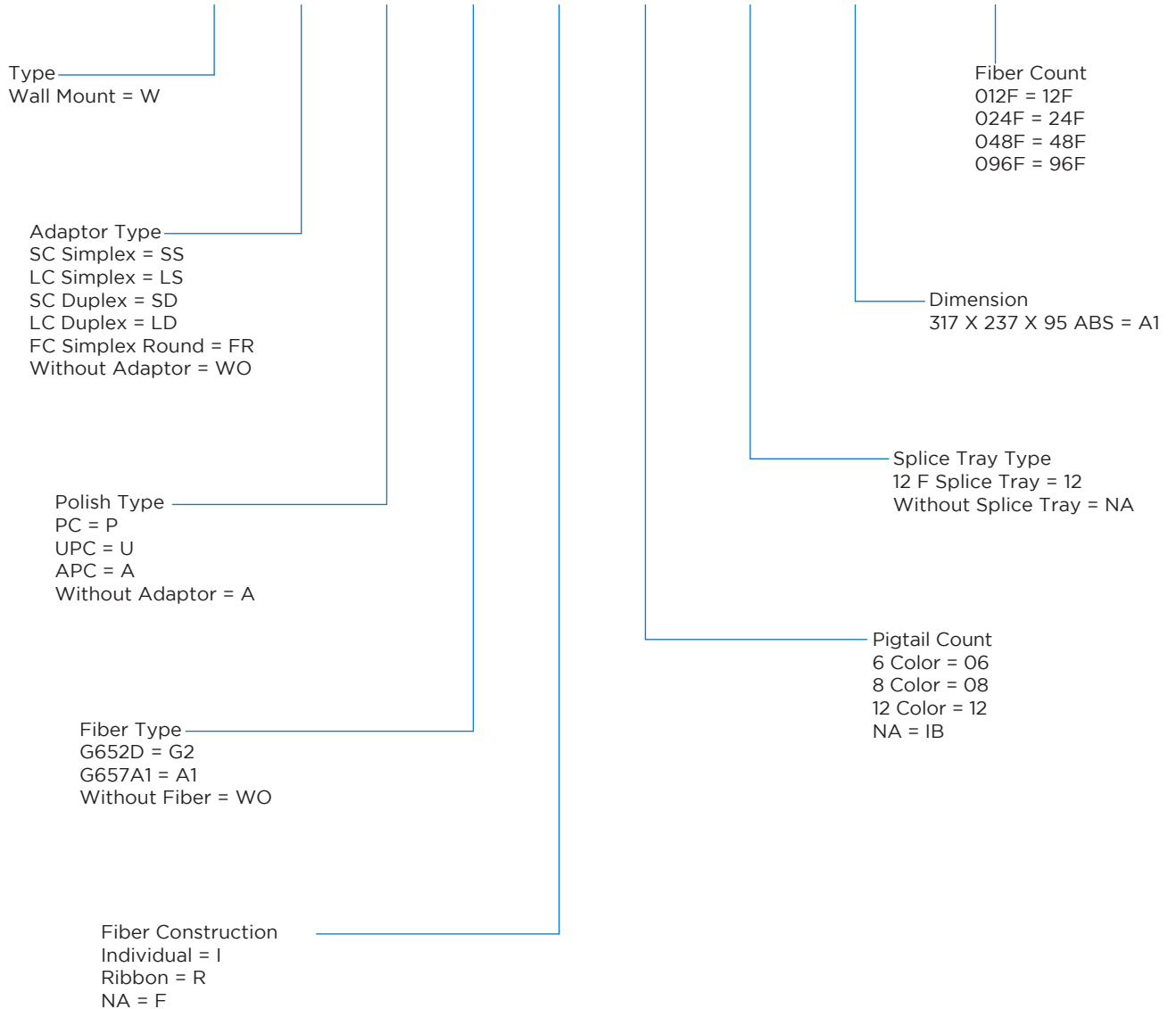
ORDERING DETAILS

SL. NO.	Part code	Product description
1	FT2WSSPG2I0612A1024F	FAT Wall Mount ABS Type SC APC - 24F
2	FT2WSSPG2I0612A1048F	FAT Wall Mount ABS Type SC APC - 48F

PART CODE SCHEME

Replace X with the correct code to determine the correct FAT Box configuration

FT2 - X XX X XX X XX XX XX XXXF



FIBER MANAGEMENT SOLUTIONS

12F/24F LC/SC WALL MOUNT BOX - CRS

HTL's Wall Mount Fiber Termination Box, also known as an Optical Distribution Box, is a compact yet highly efficient fiber management solution. Designed for FTTx applications, this small-sized unit ensures flexible and reliable organization of optical fibers from one or multiple cables, along with optical splitter assemblies. It provides a consistent and structured approach to fiber management, delivering exceptional performance in even the most demanding environments.

PRODUCT FEATURES

- IP-55 rated
- Ample storage for slack
- Available with unloaded and loaded variants
- Installation: Indoor/outdoor wall mount type
- Constructed of powder coated CRCA material
- Accommodates multimode and single mode fibers
- Accommodates 1:8 SC, 1:16 SC, 1:32 SC/LC PLC splitters
- Accommodates 24 Simplex SC and 24 Duplex LC adapters
- Single door type - can be flipped over for ease of access and maintenance
- Can be preloaded with SC, LC adapters and pre-terminated cable assemblies
- Accommodates all cables below 12mm outdoor/indoor cables and 3mm OD cables



APPLICATIONS

- Premise cabling
- Campus networks
- Surveillance networks
- FTTH access networks
- Data communication networks



ORDERING DETAILS

SL. NO.	Part code	Product description
1	FTBWSSPG2I0612A1012F	Wall Mount Metal Type SC PC SM FTB - 12F
2	FTBWSSPG2I0612A1024F	Wall Mount Metal Type SC PC SM FTB - 24F
3	FTBWLDPG2I0612A1048F	Wall Mount Metal Type LC PC Duplex SM FTB - 48F

FIBER MANAGEMENT SOLUTIONS

12F/24F LC/SC WALL MOUNT BOX - CRS

HTL's Wall Mount Fiber Termination Box, also known as an Optical Distribution Box, is a compact yet highly efficient fiber management solution. Designed for FTTx applications, this small-sized unit ensures flexible and reliable organization of optical fibers from one or multiple cables, along with optical splitter assemblies. It provides a consistent and structured approach to fiber management, delivering exceptional performance in even the most demanding environments.

PRODUCT FEATURES

- IP-55 rated
- Ample storage for slack
- Available with unloaded and loaded variants
- Installation: Indoor/outdoor wall mount type
- Constructed of powder coated CRCA material
- Accommodates multimode and single mode fibers
- Accommodates 48 Simplex SC and 48 Duplex LC adapters
- Accommodates 1:8 SC, 1:16 SC, 1:32, 1:64 SC/LC PLC splitters
- Single door type - can be flipped over for ease of access and maintenance
- Can be preloaded with SC, LC adapters and pre-terminated cable assemblies
- Accommodates all cables below 12mm outdoor/indoor cables and 3mm OD cables



APPLICATIONS

- Premise cabling
- Campus networks
- Surveillance networks
- FTTH access networks
- Data communication networks



ORDERING DETAILS

SL. NO.	Part code	Product description
1	FTBWSSPG2I0612A3048F	Wall Mount Metal Type SC PC SM FTB - 48F
2	FTBWLDPG2I1212A3096F	Wall Mount Metal Type LC PC Duplex SM FTB - 96F

PART CODE SCHEME

Replace X with the correct code to determine the correct Fiber Termination Box configuration

FTB - X XX X XX X XX XX XX XXXF

Type
W = Wall Mount
D = DIN Rail Mount

Adaptor Type
SS = SC Simplex
LS = LC Simplex
SD = SC Duplex
LD = LC Duplex
FR = FC Simplex Round
WO = Without Adaptor

Polish Type
P = PC
U = UPC
A = APC
N = Without Adaptor

Fiber Type
O1 = OM1
O2 = OM2
G2 = G652D
A1 = G657A1
G7 = G657A TEC
WO = Without Fiber

Fiber Count
012F = 12F
024F = 24F
048F = 48F
096F = 96F

Dimension
A1 = Type 1
A3 = Type 2
A4 = Type 3
A5 = Type 4

Splice Tray Type
12 = 12F Splice Tray
24 = 24F Splice Tray
SH = Splice Sleeve Holder
NA = Without Splice Tray

Pigtail Count
06 = 6 Color
08 = 8 Color
12 = 12 Color
IB = NA

Fiber Construction
I = Individual
R = Ribbon
F = NA

FIBER SPLICE CLOSURES

DOME SPLICE CLOSURE - MECHANICAL TYPE

HTL's Fiber Splice Joint Closure is compact, lightweight, and user-friendly. These enclosures are recommended for aerial, buried, and outdoor applications and are compliant with IP68 rating. They are designed for use with any cable construction (loose buffer tube, central core tube, loose fiber, ribbon) in various environments (aerial, pedestal, buried, hand-hole, manhole) and for multiple splice applications (expressed, tap-off, branch, and repair). These closures are used in outside plant networks and securely houses spliced armored optical fiber cables and fibers.

PRODUCT FEATURES

- UV resistant outer dome
- IP68 rated - water proof grade
- Mechanical seal type - reusable
- 5 ports with four round ports and one oval port
- Constructed of high quality Polypropylene (PP) material



APPLICATIONS

- CATV application
- FTTH access network
- Data communication network
- Outside plant (OSP) distribution network



ORDERING DETAILS

SL. NO.	Part code	Product Description
1	JCMECTIIT1SHVSTD024F	Fiber Joint Closure Mechanical Dome Type - 24F
2	JCMECTIIT2SHVSTD048F	Fiber Joint Closure Mechanical Dome Type - 48F
3	JCMECTIIT4SHVSTD096F	Fiber Joint Closure Mechanical Dome Type - 96F
4	JCMECTIIT6SHVSTD144F	Fiber Joint Closure Mechanical Dome Type - 144F

FIBER SPLICE CLOSURES

DOME SPLICE CLOSURE - HEAT SHRINK TYPE

HTL's Fiber Splice Joint Closure is compact, lightweight, and user-friendly. These enclosures are recommended for aerial, buried, and outdoor applications and are compliant with IP68 rating. They are designed for use with any cable construction (loose buffer tube, central core tube, loose fiber, ribbon) in various environments (aerial, pedestal, buried, hand-hole, manhole) and for multiple splice applications (expressed, tap-off, branch, and repair). These closures are used in outside plant networks and securely houses spliced armored optical fiber cables and fibers.

PRODUCT FEATURES

- Heat shrink seal type
- UV resistant outer dome
- All entry ports are sealed ports
- IP68 rated - water proof grade
- 5 ports with four round ports and one oval port
- Constructed of high quality Polypropylene (PP) material



APPLICATIONS

- CATV application
- FTTH access network
- Data communication network
- Outside plant (OSP) distribution network



ORDERING DETAILS

SL. NO.	Part code	Product Description
1	JCHSTT1IT1SHVSTD024F	Fiber Joint Closure Heat Shrink Dome Type - 24F
2	JCHSTT1IT2SHVSTD048F	Fiber Joint Closure Heat Shrink Dome Type - 48F
3	JCHSTT1IT4SHVSTD096F	Fiber Joint Closure Heat Shrink Dome Type - 96F
4	JCHSTT1IT6SHVSTD144F	Fiber Joint Closure Heat Shrink Dome Type - 144F

FIBER SPLICE CLOSURES

INLINE SPLICE CLOSURE

HTL's Fiber Splice Joint Closure is compact, lightweight, and user-friendly. These enclosures are recommended for aerial, buried, and outdoor applications and are compliant with IP68 rating. They are designed for use with any cable construction (loose buffer tube, central core tube, loose fiber, ribbon) in various environments (aerial, pedestal, buried, hand-hole, manhole) and for multiple splice applications (expressed, tap-off, branch, and repair). These closures are used in outside plant networks and securely houses spliced armored optical fiber cables and fibers.

PRODUCT FEATURES

- Inline straight type
- UV resistant outer box
- All entry ports are sealed ports
- IP68 rated – water proof grade
- 4 ports with two inlet and two outlet ports
- Constructed of high quality Polypropylene (PP) material



APPLICATIONS

- CATV application
- FTTH access network
- Aerial mount installation
- Data communication network
- Outside plant (OSP) distribution network



ORDERING DETAILS

SL. NO.	Part code	Product Description
1	JCINTT1IT1SHVSTD024F	Fiber Joint Closure Inline Type – 24F
2	JCINTT1IT2SHVSTD048F	Fiber Joint Closure Inline Type – 48F
3	JCINTT1IT4SHVSTD096F	Fiber Joint Closure Inline Type – 96F
4	JCINTT1IT6SHVSTD0144F	Fiber Joint Closure Inline Type – 144F

PART CODE SCHEME

Replace X with the correct code to determine the correct Joint Closure configuration

JC - XXX XX X XX XX X XXX XXXF

Closure Model
 MEC = Mechanical
 HST = Heat Shrink
 INT = Inline Type

Variation
 T1 = Type 1
 T2 = Type 2

Fiber Type
 I = Individual
 R = Ribbon

Splice Tray Count
 T1 = 1 Tray
 T2 = 2 Trays
 T4 = 4 Trays
 T6 = 6 Trays

Fiber Count
 006F = 6F
 012F = 12F
 024F = 24F
 048F = 48F
 096F = 96F
 144F = 144F

Accessories Kit
 STD = Standard
 10P = 10 % Excess
 25P = 25 % Excess
 OTH = Other Customization

Material Type
 V = Type 1
 R = Type 2

Splice Holder Type
 SH = Splice Sleeve Holder
 SS = Splice Sleeve Splitter
 RH = Ribbon Sleeve Holder

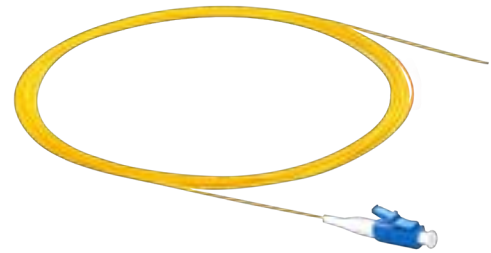
FIBER PIGTAILS

LC/SC FIBER PIGTAILS

HTL Passive Connectivity Solutions provides variety of fiber optic pigtail assemblies for singlemode and multimode type fiber applications.

PRODUCT FEATURES

- Standard or custom assemblies
- Controlled fiber protrusion type
- Precision ferrule end-face geometry
- Available in different fiber connectors
- Available in Single mode and multimode fiber cores
- Factory polished and tested as per relevant standards



APPLICATIONS

- Data center
- Central office
- FTTH access networks
- Premise cabling networks
- Data communication networks



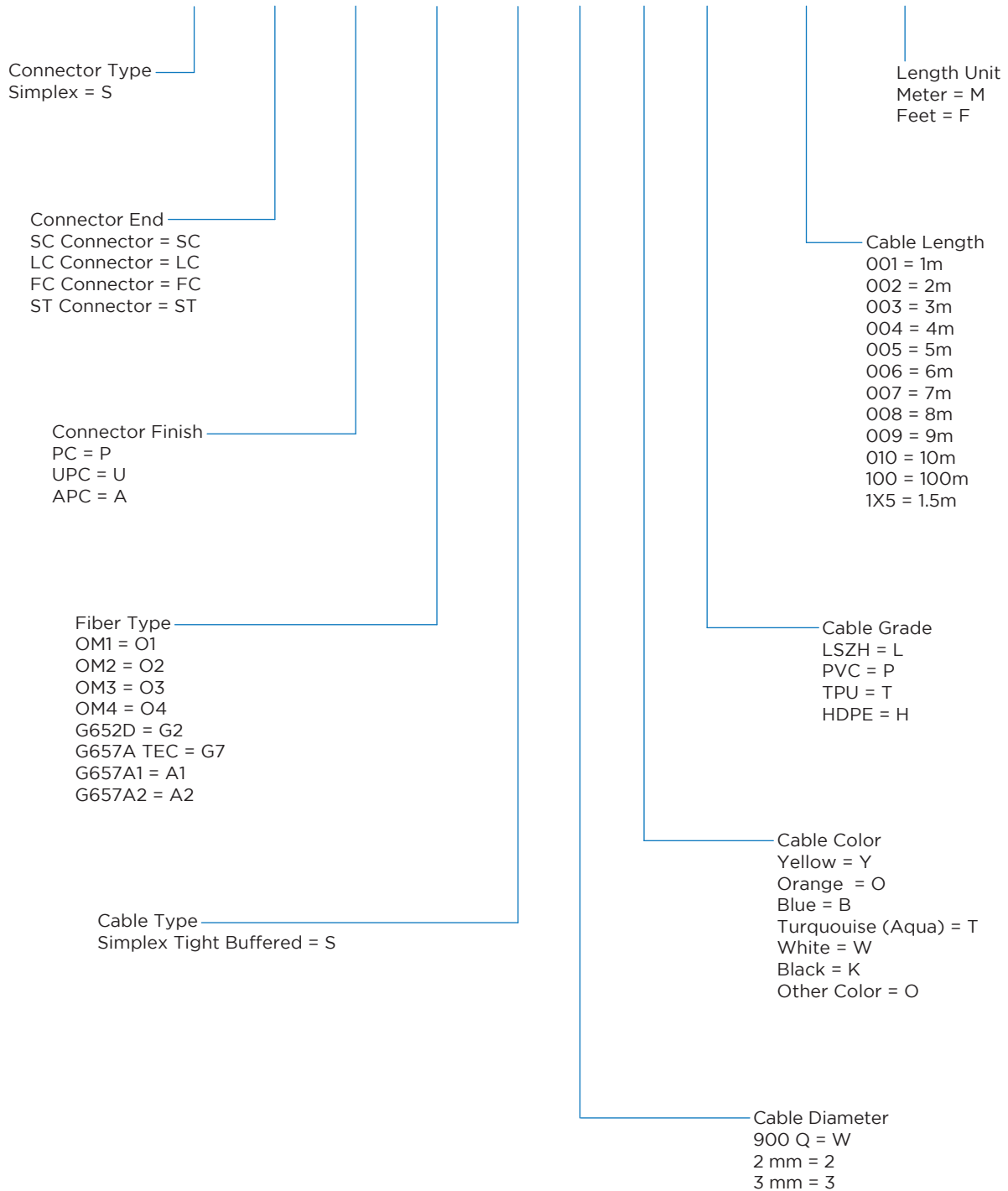
ORDERING DETAILS

SL. NO.	Part code	Product description
1	HT-PT1S3041001C	LC PC, Singlemode Pigtail 1.0m
2	HT-PT1S304101AC	LC PC, Singlemode Pigtail 1.5m
3	HT-PT1S3051001C	LC APC, Singlemode Pigtail 1.0m
4	HT-PT1S305101AC	LC APC, Singlemode Pigtail 1.5m
5	HT-PT2S3041001C	LC PC, Singlemode G657A1 Pigtail 1.0m

PART CODE SCHEME

Replace X with the correct code to determine the correct Fiber Pigtail configuration

P - X XX X XX X X X X XXX X



DUPLEX FIBER PATCH CORDS

LC - LC DUPLEX UNIBOOT FIBER PATCH CORDS

HTL's innovative & space-saving LC Pull Tab Fiber Patch Cords, as available in Single Mode & Multi-mode fiber types, are ideal for reducing cabling congestion in high-density assembly environments such as Data Centers, Central Office & FTTx networks.

PRODUCT FEATURES

- Ultra-low loss
- Compact 2mm round cable
- Low-profile housing design
- Bend-insensitive/bend optimized fibers
- Color-coded shroud to denote performance
- Fast polarity reversal with unique rotating connector keys
- Pulling tab for easy access to connectors in high-density environments
- Available in single-mode (OS1/OS2) and multi-mode (OM1/OM2/OM3/OM4/OM5) fiber types



APPLICATIONS

- FTTx
- Central Office
- Telecommunications
- Data Centers Cabling
- Structured Cabling Networks



ORDERING DETAILS

SL. NO.	Part code	Product description
1	PCULCUULCUG2R2YL001M	Patch Cord LC/UPC Uniboot G652D 2mm LSZH Yellow 1m
2	PCULCUULCUG2R2YL003M	Patch Cord LC/UPC Uniboot G652D 2mm LSZH Yellow 3m
3	PCULCUULCUA1R2YL001M	Patch Cord LC/UPC Uniboot G657A1 2mm LSZH Yellow 1m
4	PCULCUULCUA1R2YL003M	Patch Cord LC/UPC Uniboot G657A1 2mm LSZH Yellow 3m
5	PCULCUULCUO1R2OL001M	Patch Cord LC/UPC Uniboot OM1 2mm LSZH Orange 1m
6	PCULCUULCUO1R2OL003M	Patch Cord LC/UPC Uniboot OM1 2mm LSZH Orange 3m
7	PCULCUULCUO2R2AL001M	Patch Cord LC/UPC Uniboot OM2 2mm LSZH Orange 1m
8	PCULCUULCUO2R2AL003M	Patch Cord LC/UPC Uniboot OM2 2mm LSZH Orange 3m
9	PCULCUULCUO3R2AL001M	Patch Cord LC/UPC Uniboot OM3 2mm LSZH Aqua 1m
10	PCULCUULCUO3R2AL003M	Patch Cord LC/UPC Uniboot OM3 2mm LSZH Aqua 3m
11	PCULCUULCUO4R2XL001M	Patch Cord LC/UPC Uniboot OM4 2mm LSZH Erika Violet 1m
12	PCULCUULCUO4R2XL003M	Patch Cord LC/UPC Uniboot OM4 2mm LSZH Erika Violet 3m

*cable length available as per customer requirements

DUPLEX FIBER PATCH CORDS

LC - LC DUPLEX UNIBOOT PULL TAB FIBER PATCH CORDS

HTL's innovative & space-saving LC Uniboot Pull Tab Fiber Patch Cords, as available in Single Mode & Multimode fiber types, are ideal for reducing cabling congestion in high-density assembly environments such as Data Centers, Central Office & FTTx networks.

PRODUCT FEATURES

- Ultra-low loss
- Compact 2mm round cable
- Low-profile housing design
- Bend-insensitive/bend optimized fibers
- Color-coded shroud to denote performance
- Fast polarity reversal with unique rotating connector keys
- Pulling tab for easy access to connectors in high-density environments
- Available in single-mode (OS1/OS2) and multi-mode (OM1/OM2/OM3/OM4/OM5) fiber types



APPLICATIONS

- FTTx
- Central Office
- Telecommunications
- Data Centers Cabling
- Structured Cabling Networks



ORDERING DETAILS

SL. NO.	Part code	Product description
1	PCLLCULLCUG2R2YL001M	Patch Cord LC/UPC Uniboot Pull Tab G652D 2mm LSZH Yellow 1m
2	PCLLCULLCUG2R2YL003M	Patch Cord LC/UPC Uniboot Pull Tab G652D 2mm LSZH Yellow 3m
3	PCLLCULLCUA1R2YL001M	Patch Cord LC/UPC Uniboot Pull Tab G657A1 2mm LSZH Yellow 1m
4	PCLLCULLCUA1R2YL003M	Patch Cord LC/UPC Uniboot Pull Tab G657A1 2mm LSZH Yellow 3m
5	PCLLCULLCUO1R2OL001M	Patch Cord LC/UPC Uniboot Pull Tab OM1 2mm LSZH Orange 1m
6	PCLLCULLCUO1R2OL003M	Patch Cord LC/UPC Uniboot Pull Tab OM1 2mm LSZH Orange 3m
7	PCLLCULLCUO2R2AL001M	Patch Cord LC/UPC Uniboot Pull Tab OM2 2mm LSZH Orange 1m
8	PCLLCULLCUO2R2AL003M	Patch Cord LC/UPC Uniboot Pull Tab OM2 2mm LSZH Orange 3m
9	PCLLCULLCUO3R2AL001M	Patch Cord LC/UPC Uniboot Pull Tab OM3 2mm LSZH Aqua 1m
10	PCLLCULLCUO3R2AL003M	Patch Cord LC/UPC Uniboot Pull Tab OM3 2mm LSZH Aqua 3m
11	PCLLCULLCUO4R2XL001M	Patch Cord LC/UPC Uniboot Pull Tab OM4 2mm LSZH Erika Violet 1m
12	PCLLCULLCUO4R2XL003M	Patch Cord LC/UPC Uniboot Pull Tab OM4 2mm LSZH Erika Violet 3m

*cable length available as per customer requirements

PART CODE SCHEME

Replace X with the correct code to determine the correct LC Uniboot Patch Cord configuration

PC - X XX X X XX X XX X X X X XXX X

Connector Type - A Side
U = Uniboot
L = Uniboot Pull Tab

Connector Name A Side
LC = LC

Polish Type
U = UPC

Connector Type - B Side
U = Uniboot

Connector Name B Side
LC = LC

Polish Type
U = UPC

Fiber Type
G2 = G652D
A1 = G657A1
O1 = OM1
O2 = OM2
O3 = OM3
O4 = OM4
O5 = OM5

Length Unit
M = Meter
T = Ft

Cable Length
001 = 1m
002 = 2m
003 = 3m
004 = 4m
005 = 5m
006 = 6m
007 = 7m
008 = 8m
009 = 9m
010 = 10m
100 = 100m
1X5 = 1.5m

Cable Outer Jacket
H = HDPE
L = LSZH
P = PVC
T = TPU

Cable Colour
Y = Yellow
O = Orange
A = Turquoise (Aqua)
X = Erika Violet
C = Lime Green

Cable Dia
2 = 2mm

Cable Type
R = 2 Fiber Round Cable

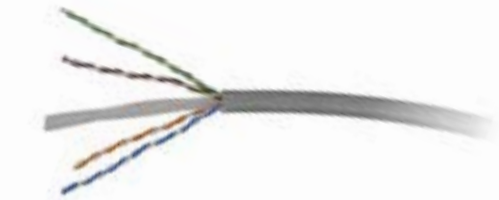
ETHERNET CABLES

CAT6 UTP ETHERNET LAN CABLE

HTL Passive Connectivity Solutions Cat6 UTP cable is designed to support high data rates, high bandwidth digital applications and indoor fixed installations.

PRODUCT FEATURES

- 4Pair UTP cable
- 23AWG & 24AWG solid bare copper
- Available in LSZH and FR PVC jacket
- Supports IEEE 802.3bt 4P PoE+ applications
- Supports 1Gbps speed data Ethernet applications
- Operates at bandwidth of 250 MHz for high data rates
- Temperature rating during operation and storage 75°C
- Packaging type: Reel of 305m in a spool in a snag free box
- Meets and exceeds requirements of ANSI/TIA-568.2-D and ISO/IEC 11801 specifications



APPLICATIONS

- Premise cabling
- LAN Ethernet systems
- Data communication networks
- Surveillance camera networks



ORDERING DETAILS

SL. NO.	Part code	Product description
1	CABAUASBNSNFG305MR	CAT6 U/UTP 23AWG Cable - PVC
2	CABAUASBNSNLG305MR	CAT6 U/UTP 23AWG Cable - LSZH
3	CABAUBSBNFG305MR	CAT6 U/UTP 24AWG Cable - PVC
4	CABAUBSBNLFG305MR	CAT6 U/UTP 24AWG Cable - LSZH

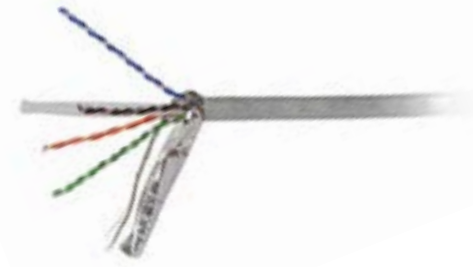
ETHERNET CABLES

CAT6 F/UTP ETHERNET LAN CABLE

HTL Passive Connectivity Solutions Cat6 F/UTP cable is designed to support high data rates, high bandwidth digital applications and provides superior electromagnetic interference protection for indoor shielded installations.

PRODUCT FEATURES

- 4Pair F/UTP cable
- 23AWG solid bare copper
- Available in LSZH and FR PVC jacket
- Packaging type: Reel of 500m in a spool
- Supports IEEE 802.3bt 4P PoE+ applications
- Supports 1Gbps speed data Ethernet applications
- Operates at bandwidth of 250 MHz for high data rates
- Enhanced overall Aluminum foiled F/UTP construction
- Temperature rating during operation and storage 75°C
- Provides excellent electromagnetic interference (EMI) protection
- Meets and exceeds requirements of ANSI/TIA-568.2-D and ISO/IEC 11801 specifications



APPLICATIONS

- Premise cabling
- LAN Ethernet systems
- Data communication networks
- Surveillance camera networks



ORDERING DETAILS

SL. NO.	Part code	Product description
1	CABAFASBNSNFG305MR	CAT6 F/UTP 23AWG Cable - PVC
2	CABAFASBNSNLG305MR	CAT6 F/UTP 23AWG Cable - LSZH

ETHERNET CABLES

CAT6 S/FTP ETHERNET LAN CABLE

HTL Passive Connectivity Solutions Cat6 S/FTP cable is designed to support high data rates, high bandwidth digital applications and provides superior electromagnetic interference protection and voice immunity for indoor shielded installations.

PRODUCT FEATURES

- 4Pair S/FTP cable
- 23AWG solid bare copper
- Available in LSZH and FR PVC jacket
- Packaging type: Reel of 500m in a spool
- Supports IEEE 802.3bt 4P PoE+ applications
- Supports 1Gbps speed data Ethernet applications
- Enhanced overall high screen coverage outer braid
- Individual foil around each pair STP cable construction
- Operates at bandwidth of 250 MHz for high data rates
- Temperature rating during operation and storage 75°C
- Provides superior electromagnetic interference (EMI) protection
- Provide superior noise immunity and coupling attenuation performance
- Meets and exceeds requirements of ANSI/TIA-568.2-D and ISO/IEC 11801 specifications



APPLICATIONS

- Premise cabling
- LAN Ethernet systems
- Data communication networks
- Surveillance camera networks



ORDERING DETAILS

SL. NO.	Part code	Product description
1	CABASASB4DGFAPB305MR	CAT6 S/FTP 23AWG Cable - PE
2	CABASASB4DGFAPB305MR	CAT6 S/FTP 23AWG Cable - LSZH

ETHERNET CABLES

CAT6A UTP ETHERNET HIGH SPEED CABLE

HTL Passive Connectivity Solutions Cat6A UTP cable is designed to support high data rates, high bandwidth digital applications and indoor fixed installations.

PRODUCT FEATURES

- 4Pair UTP cable
- 23AWG solid bare copper
- Minimizes alien crosstalk signals
- Available in LSZH and FR PVC jacket
- Packaging type: Reel of 500m in a spool
- Supports IEEE 802.3bt 4P PoE+ applications
- Supports 10Gbps speed data Ethernet applications
- Operates at bandwidth of 500 MHz for high data rates
- Temperature rating during operation and storage 75°C
- Meets and exceeds requirements of ANSI/TIA-568.2-D and ISO/IEC 11801 specifications



APPLICATIONS

- Data center
- Premise cabling
- LAN Ethernet systems
- Data communication networks
- Surveillance camera networks



ORDERING DETAILS

SL. NO.	Part code	Product description
1	CABBUASBNSNFG305MR	CAT6A U/UTP 23AWG Cable - PVC
2	CABBUBSBNSNLG305MR	CAT6A U/UTP 24AWG Cable - LSZH

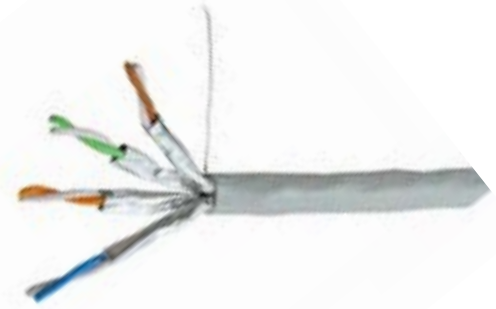
ETHERNET CABLES

CAT6A U/FTP ETHERNET HIGH SPEED CABLE

HTL Passive Connectivity Solutions Cat6A U/FTP cable is designed to support high data rates, high bandwidth digital applications and provides superior electromagnetic interference protection for indoor shielded installations.

PRODUCT FEATURES

- 4Pair U/FTP cable
- 23AWG solid bare copper
- Available in LSZH and FR PVC jacket
- Packaging type: Reel of 500m in a spool
- Supports IEEE 802.3bt 4P PoE+ applications
- Supports 10Gbps speed data Ethernet applications
- Operates at bandwidth of 500 MHz for high data rates
- Temperature rating during operation and storage 75°C
- Provides excellent electromagnetic interference (EMI) protection
- Enhanced individual Aluminum foiled around each pair U/FTP construction
- Meets and exceeds requirements of ANSI/TIA-568.2-D and ISO/IEC 11801 specifications



APPLICATIONS

- Data center
- Premise cabling
- LAN Ethernet systems
- Data communication networks
- Surveillance camera networks



ORDERING DETAILS

SL. NO.	Part code	Product description
1	CABBIASBNSNFG305MR	CAT6A U/FTP 23AWG Cable - PVC
2	CABBIASBNSNLG305MR	CAT6A U/FTP 23AWG Cable - LSZH

ETHERNET CABLES

CAT6A F/UTP ETHERNET HIGH SPEED CABLE

HTL Passive Connectivity Solutions Cat6A F/UTP cable is designed to support high data rates, high bandwidth digital applications and provides superior electromagnetic interference protection for indoor shielded installations.

PRODUCT FEATURES

- 4Pair F/UTP cable
- 23AWG solid bare copper
- Available in LSZH and FR PVC jacket
- Packaging type: Reel of 500m in a spool
- Supports IEEE 802.3bt 4P PoE+ applications
- Supports 10Gbps speed data Ethernet applications
- Operates at bandwidth of 500 MHz for high data rates
- Enhanced overall Aluminum foiled F/UTP construction
- Temperature rating during operation and storage 75°C
- Provides excellent electromagnetic interference (EMI) protection
- Meets and exceeds requirements of ANSI/TIA-568.2-D and ISO/IEC 11801 specifications



APPLICATIONS

- Data center
- Premise cabling
- LAN Ethernet systems
- Data communication networks
- Surveillance camera networks



ORDERING DETAILS

SL. NO.	Part code	Product description
1	CABBFASBNSNFG305MR	CAT6A F/UTP 23AWG Cable - PVC
2	CABBFASBNSNLG305MR	CAT6A F/UTP 23AWG Cable - LSZH

ETHERNET CABLES

CAT6A S/FTP ETHERNET HIGH SPEED CABLE

HTL Passive Connectivity Solutions Cat6A S/FTP cable is designed to support high data rates, high bandwidth digital applications and provides superior electromagnetic interference protection and voice immunity for indoor shielded installations.

PRODUCT FEATURES

- 4Pair S/FTP cable
- 23AWG solid bare copper
- Available in LSZH and FR PVC jacket
- Packaging type: Reel of 500m in a spool
- Supports IEEE 802.3bt 4P PoE+ applications
- Supports 10Gbps speed data Ethernet applications
- Enhanced overall high screen coverage outer braid
- Individual foil around each pair STP cable construction
- Operates at bandwidth of 500 MHz for high data rates
- Temperature rating during operation and storage 75°C
- Provides superior electromagnetic interference (EMI) protection
- Provide superior noise immunity and coupling attenuation performance
- Meets and exceeds requirements of ANSI/TIA-568.2-D and ISO/IEC 11801 specifications



APPLICATIONS

- Data center
- Premise cabling
- LAN Ethernet systems
- Data communication networks
- Surveillance camera networks



ORDERING DETAILS

SL. NO.	Part code	Product description
1	CABBSASB4DGFAPB305MR	CAT6A S/FTP 23AWG Cable - PVC
2	CABBSBSB4DGFAPB305MR	CAT6A S/FTP 24AWG Cable - LSZH

PART CODE SCHEME

Replace X with the correct code to determine the correct Ethernet Cable configuration

CAB - X X X X X X X X X X X X XXX X X

Category Variant
 CAT6 = A
 CAT6A = B
 CAT5E = C

Category Type
 UTP = U
 SF/UTP = S
 F/UTP = F
 U/FTP = I

AWG
 23 = A
 24 = B
 26 = C

Copper Cable Type
 Solid = S
 Stranded = T

Copper Type
 Bare Copper = B
 Tinned Copper = T

Tinned Copper Branding %
 40% = 4
 50% = 5
 60% = 6
 ≥70% = 7
 Customized = C
 UTP & F/UTP Not Applicable = N
 Only Strength Member GI = M

Sheath Type
 Single Sheath = S
 Double Sheath = D

Inner Sheath Color
 Grey = G
 Black = B
 Blue = L
 Green = N
 Yellow = Y
 Red = R

Packing
 Box = B
 Reel = R

Length Unit
 Meter = M
 FT = T

Length
 305 = 305
 500 = 500

Outer Sheath Color
 Grey = G
 Black = B
 Blue = L
 Green = N
 Yellow = Y
 Red = R
 Single Sheath = N

Outer Sheath Material
 PVC = F
 LSZH = L
 PE = P
 Single Sheath = N

Armouring
 GI Armoured = G
 AL Armoured = A
 Non Armoured = N
 ECCS Armoured = E

Inner Sheath Material
 PVC = F
 LSZH = L
 PE = P

ETHERNET PATCH CORDS

CAT6 UTP RJ-45 PATCH CORD

HTL Passive Connectivity Solutions Cat6 UTP patch cords are designed to support high data rates, high bandwidth digital applications and indoor fixed installations.

PRODUCT FEATURES

- Wiring: T568B
- 4Pair UTP RJ-45 patch cords
- Supports data Ethernet applications
- Both component & channel compliant
- Patch cords are available in 5 colours
- Available in LSZH and FR PVC Jacket
- 24AWG multi strand copper conductors
- Supports IEEE 802.3bt 4P PoE+ applications
- Available in standard and customized lengths
- Operates at bandwidth of 250 MHz for high data rates
- Temperature rating during operation and storage 75°C
- Slim boot design RJ-45 unshielded plug for superior performance
- Meets and exceeds requirements of ANSI/TIA-568.2-D and ISO/IEC 11801 specifications



APPLICATIONS

- Data center
- Access points
- Premise cabling
- LAN Ethernet systems
- Data communication networks
- Indoor surveillance camera networks



ORDERING DETAILS

SL. NO.	Part code	Product description
1	PAUASBNAC1SNFG001M	CAT6 U/UTP Patch cord PVC Grey -1m
2	PAUASBNAC1SNLG001M	CAT6 U/UTP Patch cord LSZH Grey -1m
3	PAUASBNAC1SNFG003M	CAT6 U/UTP Patch cord PVC Grey -3m
4	PAUASBNAC1SNLG005M	CAT6 U/UTP Patch cord LSZH Grey -5m

ETHERNET PATCH CORDS

CAT6 FTP RJ-45 PATCH CORD

HTL Passive Connectivity Solutions Cat6 FTP shielded patch cords are designed to support high data rates, high bandwidth digital applications and indoor fixed installations.

PRODUCT FEATURES

- Wiring: T568B
- 4Pair FTP RJ-45 patch cords
- Supports data Ethernet applications
- Both component & channel compliant
- Patch cords are available in 5 colours
- Available in LSZH and FR PVC Jacket
- 24AWG multi strand copper conductors
- Supports IEEE 802.3bt 4P PoE+ applications
- Available in standard and customized lengths
- Enhanced overall foiled FTP cable construction
- Protection against electromagnetic interference
- Operates at bandwidth of 250 MHz for high data rates
- Temperature rating during operation and storage 75°C
- Slim boot design RJ-45 shielded plug for superior performance against noise signals
- Meets and exceeds requirements of ANSI/TIA-568.2-D and ISO/IEC 11801 specifications



APPLICATIONS

- Data center
- Access points
- Premise cabling
- Shielded installations
- LAN Ethernet systems
- Data communication networks
- Indoor surveillance camera networks



ORDERING DETAILS

SL. NO.	Part code	Product description
1	PAFASBNAC1SNFG001M	CAT6 F/UTP Patch cord PVC Grey -1m
2	PAFASBNAC1SNLG001M	CAT6 F/UTP Patch cord LSZH Grey -1m
3	PAFASBNAC1SNFG003M	CAT6 F/UTP Patch cord PVC Grey -3m
4	PAFASBNAC1SNLG005M	CAT6 F/UTP Patch cord LSZH Grey -5m

ETHERNET PATCH CORDS

CAT6 S/FTP RJ-45 PATCH CORD

HTL Passive Connectivity Solutions Cat6 S/FTP shielded patch cords are designed to support high data rates, high bandwidth digital applications and indoor fixed installations.

PRODUCT FEATURES

- Wiring: T568B
- 4Pair FTP RJ-45 patch cords
- Supports data Ethernet applications
- Both component & channel compliant
- Patch cords are available in 5 colours
- 24AWG multi strand copper conductors
- Supports IEEE 802.3bt 4P PoE+ applications
- Available in standard and customized lengths
- Enhanced overall foiled FTP cable construction
- Protection against electromagnetic interference
- Temperature rating during operation and storage 75°C
- Slim boot design RJ-45 shielded plug for superior performance against noise signals
- Meets and exceeds requirements of ANSI/TIA-568.2-D and ISO/IEC 11801 specifications



APPLICATIONS

- Data center
- Access points
- Premise cabling
- Shielded installations
- LAN Ethernet systems
- Data communication networks
- Indoor surveillance camera networks



ORDERING DETAILS

SL. NO.	Part code	Product description
1	PASASB4AC1BLSANN001M	CAT6 S/FTP 23AWG Patch cord LSZH Black -1m
2	PASASB4AC1BLSANN003M	CAT6 S/FTP 23AWG Patch cord LSZH Black -3m
3	PASBTB4AC1BLSANN001M	CAT6 S/FTP 24AWG Patch cord LSZH Black -1m
4	PASBTB4AC1BLSANN003M	CAT6 S/FTP 24AWG Patch cord LSZH Black -3m

ETHERNET PATCH CORDS

CAT6A UTP RJ-45 PATCH CORD

HTL Passive Connectivity Solutions Cat6A U/UTP patch cords are designed to support high data rates, high bandwidth digital applications and indoor fixed installations.

PRODUCT FEATURES

- Wiring: T568B
- 4Pair UTP RJ-45 patch cords
- Both component & channel compliant
- Patch cords are available in 5 colours
- Available in LSZH and FR PVC Jacket
- 24AWG multi strand copper conductors
- Supports 10G data Ethernet applications
- Supports IEEE 802.3bt 4P PoE+ applications
- Available in standard and customized lengths
- Operates at bandwidth of 500 MHz for high data rates
- Temperature rating during operation and storage 75°C
- Slim boot design RJ-45 unshielded plug for superior performance
- Meets and exceeds requirements of ANSI/TIA-568.2-D and ISO/IEC 11801 specifications



APPLICATIONS

- Data center
- Access points
- Premise cabling
- LAN Ethernet systems
- Data communication networks
- Indoor surveillance camera networks



ORDERING DETAILS

SL. NO.	Part code	Product description
1	PBUASBNAC1SNFG001M	CAT6A U/UTP Patch cord PVC Grey -1mt
2	PBUASBNAC1SNLG001M	CAT6A U/UTP Patch cord LSZH Grey -1m
3	PBUASBNAC1SNFG003M	CAT6A U/UTP Patch cord PVC Grey -3m
4	PBUASBNAC1SNLG005M	CAT6A U/UTP Patch cord LSZH Grey -5m

ETHERNET PATCH CORDS

CAT6A FTP RJ-45 PATCH CORD

HTL Passive Connectivity Solutions Cat6A FTP shielded patch cords are designed to support high data rates, high bandwidth digital applications and indoor fixed installations.

PRODUCT FEATURES

- Wiring: T568B
- 4Pair FTP RJ-45 patch cords
- Both component & channel compliant
- Patch cords are available in 5 colours
- Available in LSZH and FR PVC Jacket
- 24AWG multi strand copper conductors
- Supports 10G data Ethernet applications
- Supports IEEE 802.3bt 4P PoE+ applications
- Available in standard and customized lengths
- Enhanced overall foiled FTP cable construction
- Protection against electromagnetic interference
- Operates at bandwidth of 500 MHz for high data rates
- Temperature rating during operation and storage 75°C
- Slim boot design RJ-45 shielded plug for superior performance against noise signals
- Meets and exceeds requirements of ANSI/TIA-568.2-D and ISO/IEC 11801 specifications



APPLICATIONS

- Data center
- Access points
- Premise cabling
- Shielded installations
- LAN Ethernet systems
- Data communication networks
- Indoor surveillance camera networks



ORDERING DETAILS

SL. NO.	Part code	Product description
1	PBFASBNAC1SNFG001M	CAT6A F/UTP Patch cord PVC Grey -1m
2	PBFASBNAC1SNLG001M	CAT6A F/UTP Patch cord LSZH Grey -1m
3	PBFASBNAC1SNFG003M	CAT6A F/UTP Patch cord PVC Grey -3m
4	PBFASBNAC1SNLG005M	CAT6A F/UTP Patch cord LSZH Grey -5m

ETHERNET PATCH CORDS

CAT6A S/FTP RJ-45 PATCH CORD

HTL Passive Connectivity Solutions Cat6A S/FTP shielded patch cords are designed to support high data rates, high bandwidth digital applications and indoor fixed installations.

PRODUCT FEATURES

- Wiring: T568B
- 4Pair FTP RJ-45 patch cords
- Supports data Ethernet applications
- Both component & channel compliant
- Patch cords are available in 5 colours
- 24AWG multi strand copper conductors
- Supports IEEE 802.3bt 4P PoE+ applications
- Available in standard and customized lengths
- Enhanced overall foiled FTP cable construction
- Protection against electromagnetic interference
- Temperature rating during operation and storage 75°C
- Slim boot design RJ-45 shielded plug for superior performance against noise signals
- Meets and exceeds requirements of ANSI/TIA-568.2-D and ISO/IEC 11801 specifications



APPLICATIONS

- Data center
- Access points
- Premise cabling
- Shielded installations
- LAN Ethernet systems
- Data communication networks
- Indoor surveillance camera networks



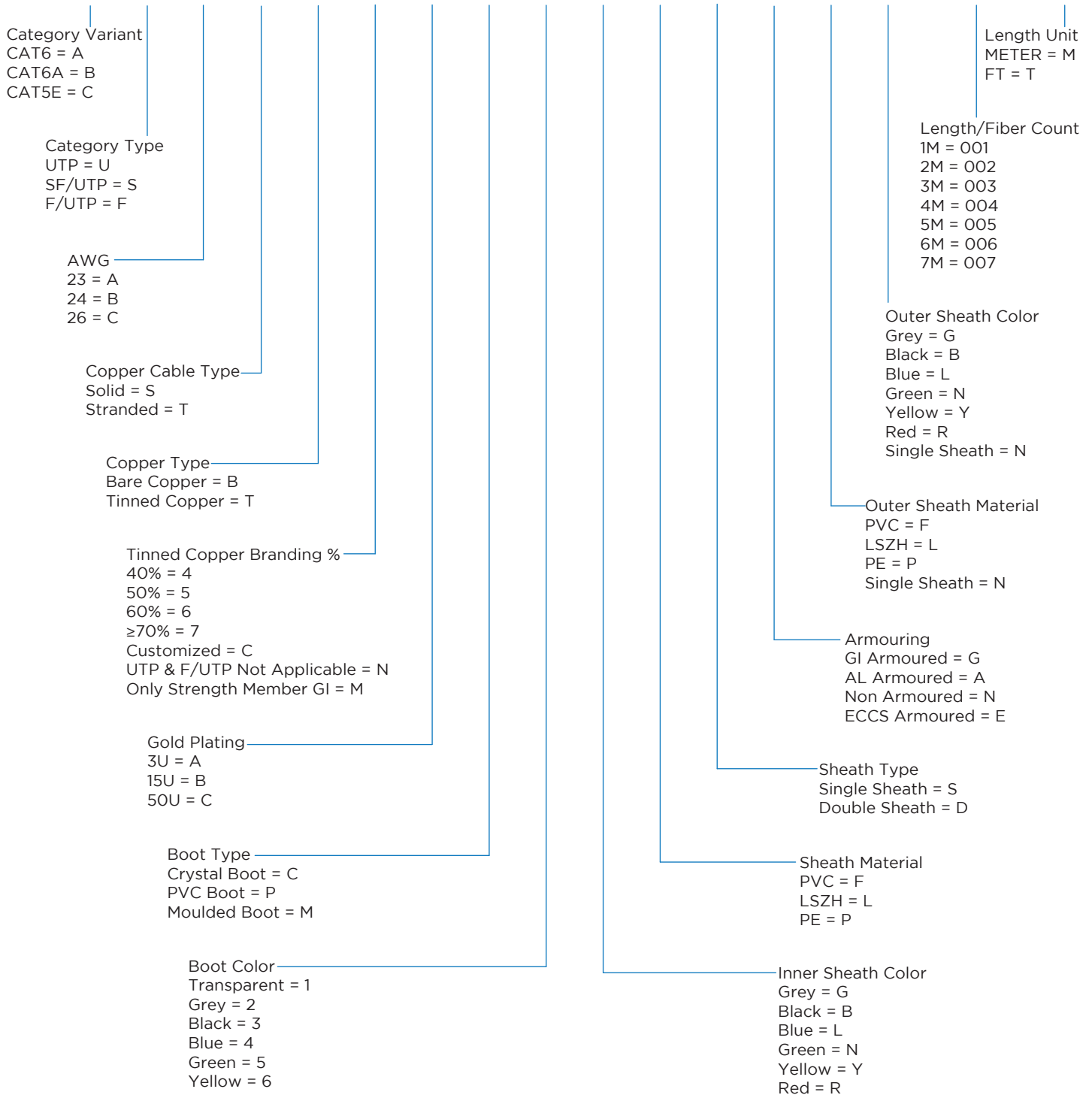
ORDERING DETAILS

SL. NO.	Part code	Product description
1	PBSASB4AC1BLSANN001M	CAT6A S/FTP 23AWG Patch cord LSZH Black -1m
2	PBSASB4AC1BLSANN003M	CAT6A S/FTP 23AWG Patch cord LSZH Black -3m
3	PBSBTB4AC1BLSANN001M	CAT6A S/FTP 24AWG Patch cord LSZH Black -1m
4	PBSBTB4AC1BLSANN003M	CAT6A S/FTP 24AWG Patch cord LSZH Black -3m

PART CODE SCHEME

Replace X with the correct code to determine the correct Ethernet Patch Cords configuration

P - X X X X X X X X X X X X X X XXX X



ETHERNET IO JACKS

CAT6 UNSHIELDED RJ-45 IO JACK

HTL Passive Connectivity Solutions Cat6 U/UTP (Unshielded Twisted Pair) information outlet jacks are designed to support high data rates, high bandwidth digital applications and indoor fixed installations.

PRODUCT FEATURES

- Wiring: T568A/B
- Easy punch down type
- Keystone universal design
- Supports data Ethernet applications
- Both component & channel compliant
- Keystone IO's are available in 6 colours
- Molded plastic material for body and housing
- Operates at bandwidth of 250 MHz for high data rates
- Temperature rating during operation and storage 75°C
- Designed for unshielded twisted pair (UTP) 23/24AWG cables
- Meets and exceeds requirements of ANSI/TIA-568.2-D and ISO/IEC 11801 specifications



APPLICATIONS

- Data center
- Access points
- Premise cabling
- LAN Ethernet systems
- Data communication networks
- Indoor surveillance camera networks



ORDERING DETAILS

SL. NO.	Part code	Product description
1	IOJKC06UTPA03WHI	CAT6 UTP IO Jack White
2	IOJKC06UTPA03BLU	CAT6 UTP IO Jack Blue
3	IOJKC06UTPA03GRN	CAT6 UTP IO Jack Green
4	IOJKC06UTPA03BLK	CAT6 UTP IO Jack Black

ETHERNET IO JACKS

CAT6 SHIELDED DIE-CAST RJ-45 IO JACK

HTL Passive Connectivity Solutions Cat6 STP (Shielded Twisted Pair) information outlet jacks are designed to support high data rates, high bandwidth digital applications and indoor fixed installations.

PRODUCT FEATURES

- Wiring: T568A/B
- Easy punch down type
- Keystone universal design
- Supports data Ethernet applications
- Both component & channel compliant
- Keystone IO's are available in 6 colours
- Operates at bandwidth of 250 MHz for high data rates
- Temperature rating during operation and storage 75°C
- Designed for shielded twisted pair (STP) 23/24AWG cables
- Excellent shielding for protection against electromagnetic interference
- Molded plastic material for body and housing with Die cast outer body for shielding
- Meets and exceeds requirements of ANSI/TIA-568.2-D and ISO/IEC 11801 specifications



APPLICATIONS

- Data center
- Access points
- Premise cabling
- Shielded installations
- LAN Ethernet systems
- Data communication networks
- Indoor surveillance camera networks



ORDERING DETAILS

SL. NO.	Part code	Product description
1	IOJKC06STPA03WHI	CAT6 STP IO Jack White
2	IOJKC06STPA03BLU	CAT6 STP IO Jack Blue
3	IOJKC06STPA03GRN	CAT6 STP IO Jack Green
4	IOJKC06STPA03BLK	CAT6 STP IO Jack Black

ETHERNET IO JACKS

CAT6A UNSHIELDED RJ-45 IO JACK

HTL Passive Connectivity Solutions Cat6A U/UTP (Unshielded Twisted Pair) information outlet jacks are designed to support high data rates, high bandwidth digital applications and indoor fixed installations.

PRODUCT FEATURES

- Wiring: T568A/B
- Easy punch down type
- Keystone universal design
- Both component & channel compliant
- Keystone IO's are available in 6 colours
- Supports 10G data Ethernet applications
- Molded plastic material for body and housing
- Operates at bandwidth of 500 MHz for high data rates
- Temperature rating during operation and storage 75°C
- Designed for unshielded twisted pair (UTP) 23/24AWG cables
- Meets and exceeds requirements of ANSI/TIA-568.2-D and ISO/IEC 11801 specifications



APPLICATIONS

- Data center
- Access points
- Premise cabling
- LAN Ethernet systems
- Data communication networks
- Indoor surveillance camera networks



ORDERING DETAILS

SL. NO.	Part code	Product description
1	IOJKC6AUTPA03WHI	CAT6A UTP IO Jack White
2	IOJKC6AUTPA03BLU	CAT6A UTP IO Jack Blue
3	IOJKC6AUTPA03GRN	CAT6A UTP IO Jack Green
4	IOJKC6AUTPA03BLK	CAT6A UTP IO Jack Black

ETHERNET IO JACKS

CAT6A SHIELDED DIE-CAST RJ-45 IO JACK

HTL Passive Connectivity Solutions Cat6A STP (Shielded Twisted Pair) information outlet jacks are designed to support high data rates, high bandwidth digital applications and indoor fixed installations.

PRODUCT FEATURES

- Wiring: T568A/B
- Easy punch down type
- Keystone universal design
- Both component & channel compliant
- Keystone IO's are available in 6 colours
- Supports 10G data Ethernet applications
- Operates at bandwidth of 500 MHz for high data rates
- Temperature rating during operation and storage 75°C
- Designed for shielded twisted pair (STP) 23/24AWG cables
- Excellent shielding for protection against electromagnetic interference
- Molded plastic material for body and housing with Die cast outer body for shielding
- Meets and exceeds requirements of ANSI/TIA-568.2-D and ISO/IEC 11801 specifications



APPLICATIONS

- Data center
- Access points
- Premise cabling
- Shielded installations
- LAN Ethernet systems
- Data communication networks
- Indoor surveillance camera networks



ORDERING DETAILS

SL. NO.	Part code	Product description
1	IOJKC6ASTPA03WHI	CAT6A STP IO Jack White
2	IOJKC6ASTPA03BLU	CAT6A STP IO Jack Blue
3	IOJKC6ASTPA03GRN	CAT6A STP IO Jack Green
4	IOJKC6ASTPA03BLK	CAT6A STP IO Jack Black

PART CODE SCHEME

Replace X with the correct code to determine the correct IO Jack configuration

IOJK - XXX XXX X XX XXX

Type

CAT 5E = C5E
CAT 6 = C06
CAT 6A = C6A

Shielding

UTP = UTP
STP = STP

IO Config

90 = A
180 = B
Toolless = T

Color

White = WHI
Red = RED
Yellow = YLW
Green = GRN

IO Gold

3U = 03
50U = 50

ETHERNET IO JACK PANEL

CAT6 UNSHIELDED IO JACK PANEL - 1U

HTL Passive Connectivity Solutions Cat6 UTP (Unshielded Twisted Pair) IO jack panels are designed to support high data rates, high bandwidth digital applications and indoor fixed installations.

PRODUCT FEATURES

- Wiring: T568A/B
- Easy punch down type
- Keystone universal design
- Supports data Ethernet applications
- Available in straight and angular type
- Both component & channel compliant
- Available in 1U 24 ports and 2U 48 ports
- Loaded with black Keystone IO UTP jacks
- Operates at bandwidth of 250 MHz for high data rates
- Temperature rating during operation and storage 75°C
- Powder coated CRCA black panel with removable rear cable manager
- Meets and exceeds requirements of ANSI/TIA-568.2-D and ISO/IEC 11801 specifications



APPLICATIONS

- Data center
- Access points
- Premise cabling
- LAN Ethernet systems
- Data communication networks



ORDERING DETAILS

SL. NO.	Part code	Product description
1	PPC06UTPS1L06B24	CAT6 UTP 24P 1U Straight Jack Panel
2	PPC06UTPA1L12B24	CAT6 UTP 24P 1U Angled Jack Panel
3	PPC06UTPS2L08B48	CAT6 UTP 48P 2U Straight Jack Panel
4	PPC06UTPA2L18B48	CAT6 UTP 48P 2U Angled Jack Panel

ETHERNET IO JACK PANEL

CAT6 SHIELDED IO JACK PANEL - 1U

HTL Passive Connectivity Solutions Cat6 STP (Shielded Twisted Pair) IO jack panels are designed to support high data rates, high bandwidth digital applications and indoor fixed installations.

PRODUCT FEATURES

- Wiring: T568A/B
- Easy punch down type
- Keystone universal design
- Supports data Ethernet applications
- Available in straight and angular type
- Both component & channel compliant
- Available in 1U 24 ports and 2U 48 ports
- Loaded with Keystone STP Die-cast type IO jacks
- Operates at bandwidth of 250 MHz for high data rates
- Temperature rating during operation and storage 75°C
- Excellent shielding for protection against electromagnetic interference
- Powder coated CRCA black panel with removable rear cable manager
- Meets and exceeds requirements of ANSI/TIA-568.2-D and ISO/IEC 11801 specifications



APPLICATIONS

- Data center
- Access points
- Premise cabling
- Shielded installations
- LAN Ethernet systems
- Data communication networks



ORDERING DETAILS

SL. NO.	Part code	Product description
1	PPC06STPS1L06B24	CAT6 STP 24P 1U Straight Jack Panel
2	PPC06STPA1L12B24	CAT6 STP 24P 1U Angled Jack Panel
3	PPC06STPS2L08B48	CAT6 STP 48P 2U Straight Jack Panel
4	PPC06STPA2L18B48	CAT6 STP 48P 2U Angled Jack Panel

ETHERNET IO JACK PANEL

CAT6A UNSHIELDED IO JACK PANEL - 1U

HTL Passive Connectivity Solutions Cat6A UTP (Unshielded Twisted Pair) IO jack panels are designed to support high data rates, high bandwidth digital applications and indoor fixed installations.

PRODUCT FEATURES

- Wiring: T568A/B
- Easy punch down type
- Keystone universal design
- Available in straight and angular type
- Both component & channel compliant
- Available in 1U 24 ports and 2U 48 ports
- Supports 10G data Ethernet applications
- Loaded with black Keystone IO UTP jacks
- Operates at bandwidth of 500 MHz for high data rates
- Temperature rating during operation and storage 75°C
- Powder coated CRCA black panel with removable rear cable manager
- Meets and exceeds requirements of ANSI/TIA-568.2-D and ISO/IEC 11801 specifications



APPLICATIONS

- Data center
- Access points
- Premise cabling
- LAN Ethernet systems
- Data communication networks



ORDERING DETAILS

SL. NO.	Part code	Product description
1	PPC6AUTPS1L06B24	CAT6A UTP 24P 1U Straight Jack Panel
2	PPC6AUTPA1L12B24	CAT6A UTP 24P 1U Angled Jack Panel
3	PPC6AUTPS2L08B48	CAT6A UTP 48P 2U Straight Jack Panel
4	PPC6AUTPA2L18B48	CAT6A UTP 48P 2U Angled Jack Panel

ETHERNET IO JACK PANEL

CAT6A SHIELDED IO JACK PANEL - 1U

HTL Passive Connectivity Solutions Cat6A STP (Shielded Twisted Pair) IO jack panels are designed to support high data rates, high bandwidth digital applications and indoor fixed installations.

PRODUCT FEATURES

- Wiring: T568A/B
- Easy punch down type
- Keystone universal design
- Available in straight and angular type
- Both component & channel compliant
- Available in 1U 24 ports and 2U 48 ports
- Supports 10G data Ethernet applications
- Loaded with Keystone STP Die-cast type IO jacks
- Operates at bandwidth of 500 MHz for high data rates
- Temperature rating during operation and storage 75°C
- Excellent shielding for protection against electromagnetic interference
- Powder coated CRCA black panel with removable rear cable manager
- Meets and exceeds requirements of ANSI/TIA-568.2-D and ISO/IEC 11801 specifications



APPLICATIONS

- Data center
- Access points
- Premise cabling
- Shielded installations
- LAN Ethernet systems
- Data communication networks



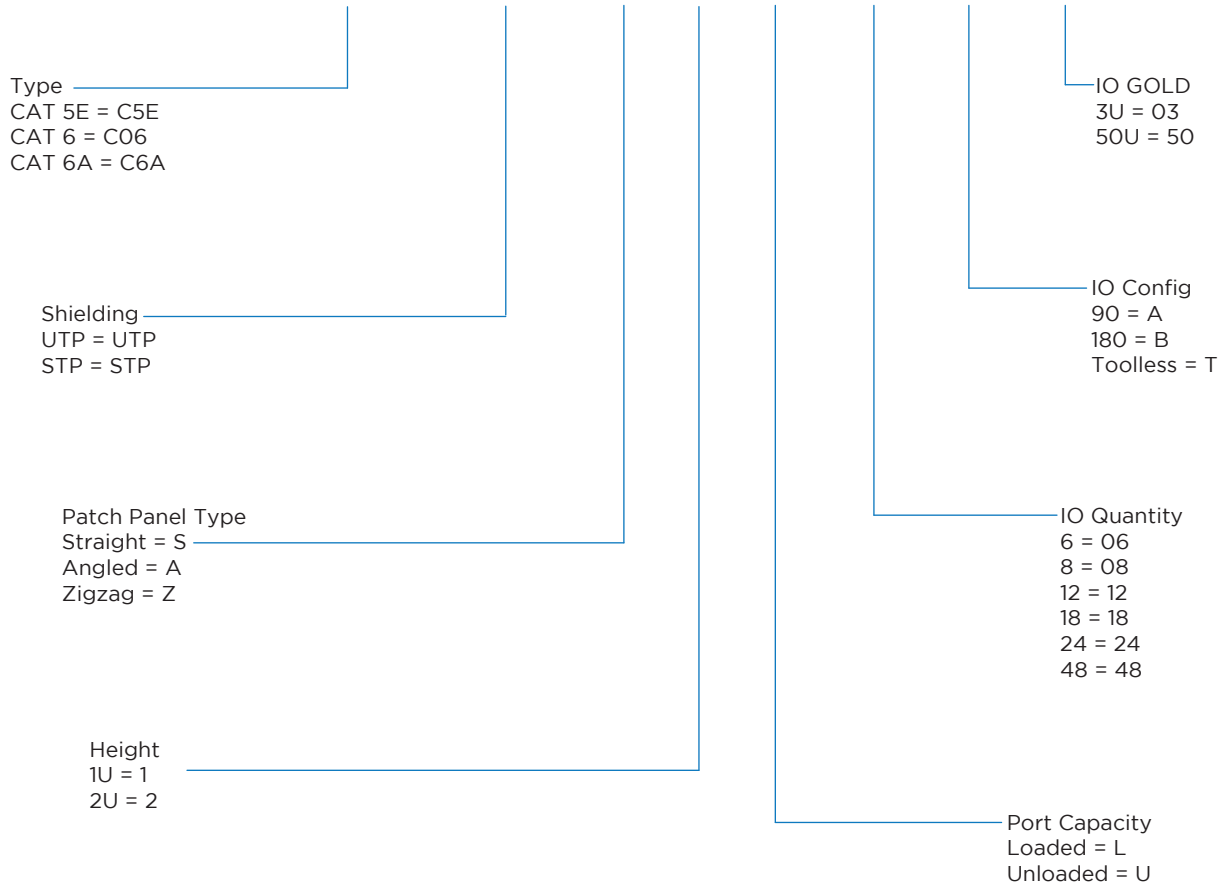
ORDERING DETAILS

SL. NO.	Part code	Product description
1	PPC6ASTPS1L06B24	CAT6A STP 24P 1U Straight Jack Panel
2	PPC6ASTPA1L12B24	CAT6A STP 24P 1U Angled Jack Panel
3	PPC6ASTPS2L08B48	CAT6A STP 48P 2U Straight Jack Panel
4	PPC6ASTPA2L18B48	CAT6A STP 48P 2U Angled Jack Panel

PART CODE SCHEME

Replace X with the correct code to determine the correct Jack Panel configuration

PP - XXX XXX X X X XX X XX



IO FACE PLATES

1P/2P/4P WALL FACEPLATE

HTL Passive Connectivity Solutions unloaded 86x86 faceplates can be configured to provide the ports required for the workstation LAN cabling. These faceplates are universal keystone design compatible with cat 6 & cat 6A unshielded and shielded keystone IO jacks

PRODUCT FEATURES

- ABS plastic body for aesthetic look
- Dimensions: 86mm X 86mm (UK style)
- Inbuilt spring type shutter for dust protection
- Available in 1port, 2 ports and 4ports design
- With integrated label holder for port identification
- Compatible for easy snap in of UTP and STP Keystone IO Jacks
- Individually removable IO ports for ease of maintenance during operations



APPLICATIONS

- Premise cabling
- Data access points
- LAN Ethernet systems
- Workstation LAN cabling
- Data communication network
- Indoor surveillance camera network



ORDERING DETAILS

SL. NO.	Part code	Product description
1	IOFCPT1PBTWTSWHI	1P Face Plate 86x86 - White
2	IOFCPT2PBTWTSWHI	2P Face Plate 86x86 - White
3	IOFCPT4PBTWTSWHI	4P Face Plate 86x86 - White

PART CODE SCHEME

Replace X with the correct code to determine the correct IO Face Plate configuration

IOFCPT - XX XX XXX XXX

Port _____
1 Port = 1P
2 Port = 2P
4 Port = 4P

Size _____
86 x 86 = BT

Color _____
White = WHI
Blue = BLU
Green = GRN
Black = BLK

Type _____
With Shutter = WTS
Without Shutter = WOS



HTL Registered office & factory:
HTL Ltd. No. 57, GST Road, Guindy, Chennai - 600032

 +91 94877 25575

 pcssales@htllimited.com

 www.htllimited.com